

2025 Chinook Salmon Redd Counts

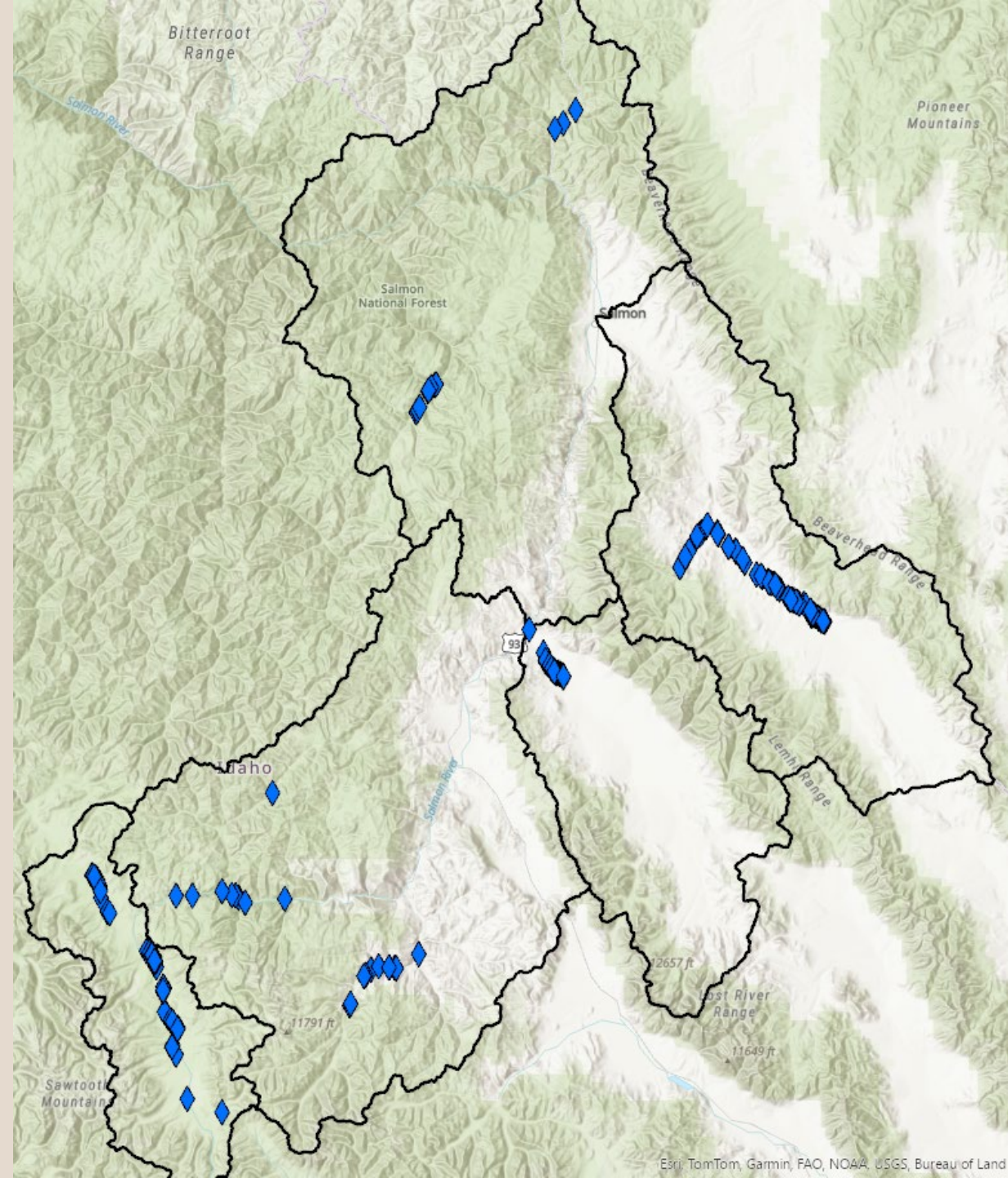
Rachael Valeria - IDFG Regional Fisheries Biologist





2025 Survey Locations

- North Fork Salmon River
- Panther Creek
- Lemhi River Drainage
 - Bear Valley Creek, Big Springs Creek, Big Timber Creek, Canyon Creek, Hayden Creek, Little Springs Creek
- Pahsimeroi River
 - Patterson Big Springs Creek
- East Fork Salmon River
 - Herd Creek
- Yankee Fork Salmon River
 - West Fork Yankee Fork
- Mainstem Salmon River
 - Valley Creek, Pole Creek

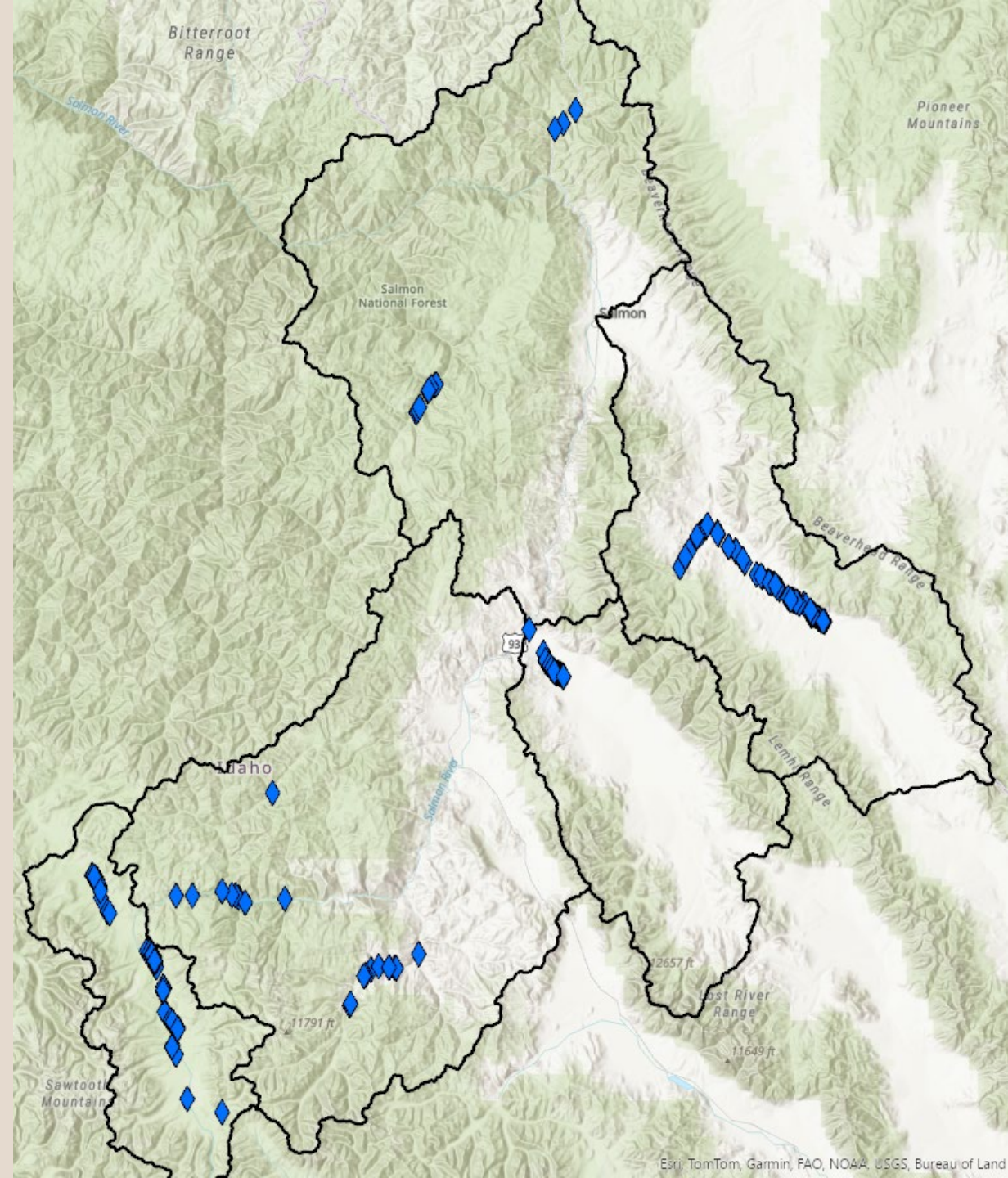




2025 Ground Survey Lengths

- North Fork Salmon River: 15.8 miles
- Lemhi River Drainage: 94.9 miles
- Pahsimeroi River: 26 miles
- East Fork Salmon River: 20.5 miles
- West Fork Yankee Fork River: 7 miles

Total: 164.2 miles (264.3 km)

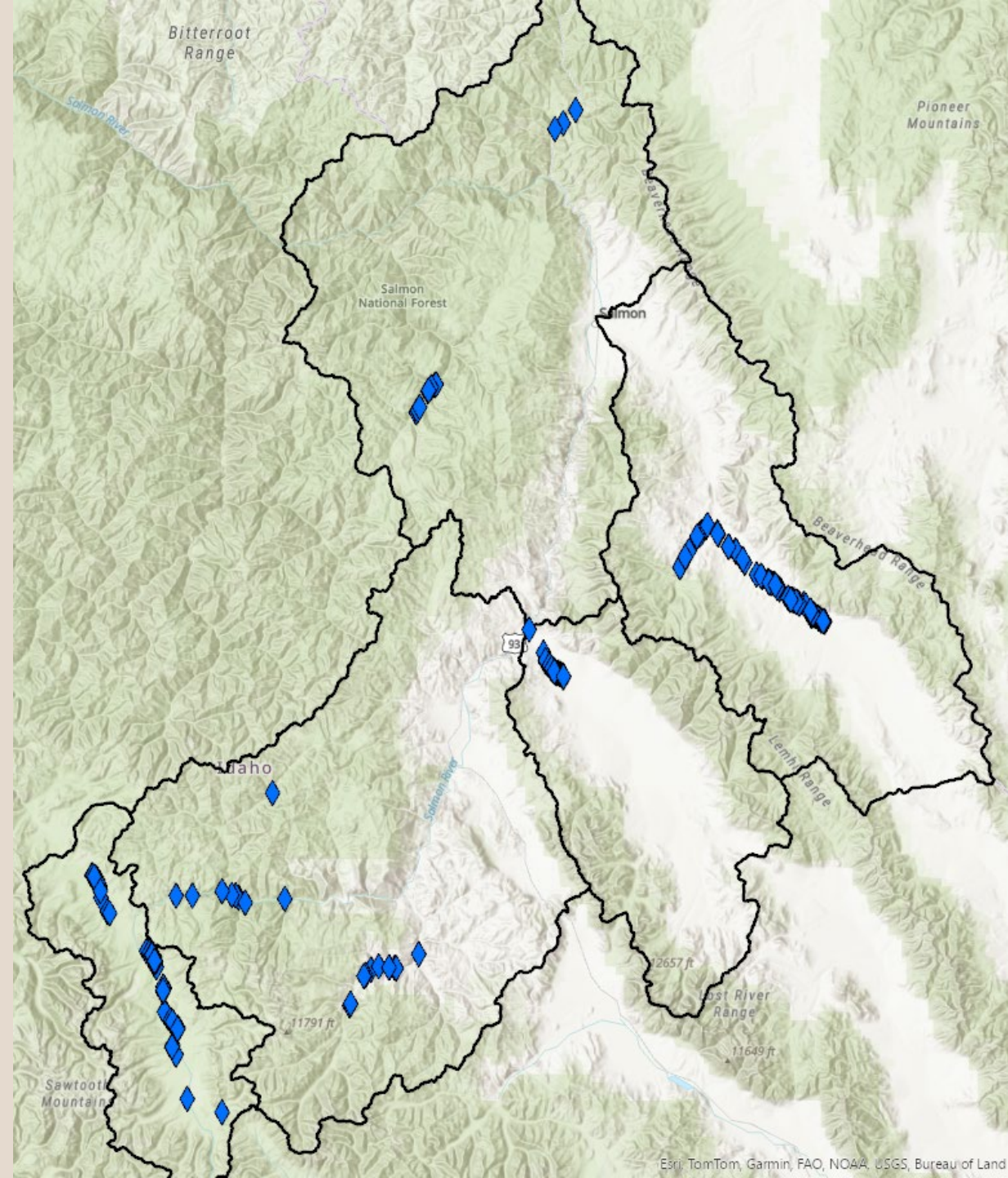




2025 Drone Survey Flights

- Panther Creek: 32 miles
- Lemhi River Drainage: 10.3 miles
- East Fork Salmon River: 21.1 miles
- Yankee Fork River: 21.9 miles
- Mainstem Salmon River Drainage: 79.7 miles

Total: 165 miles (265.6 km)



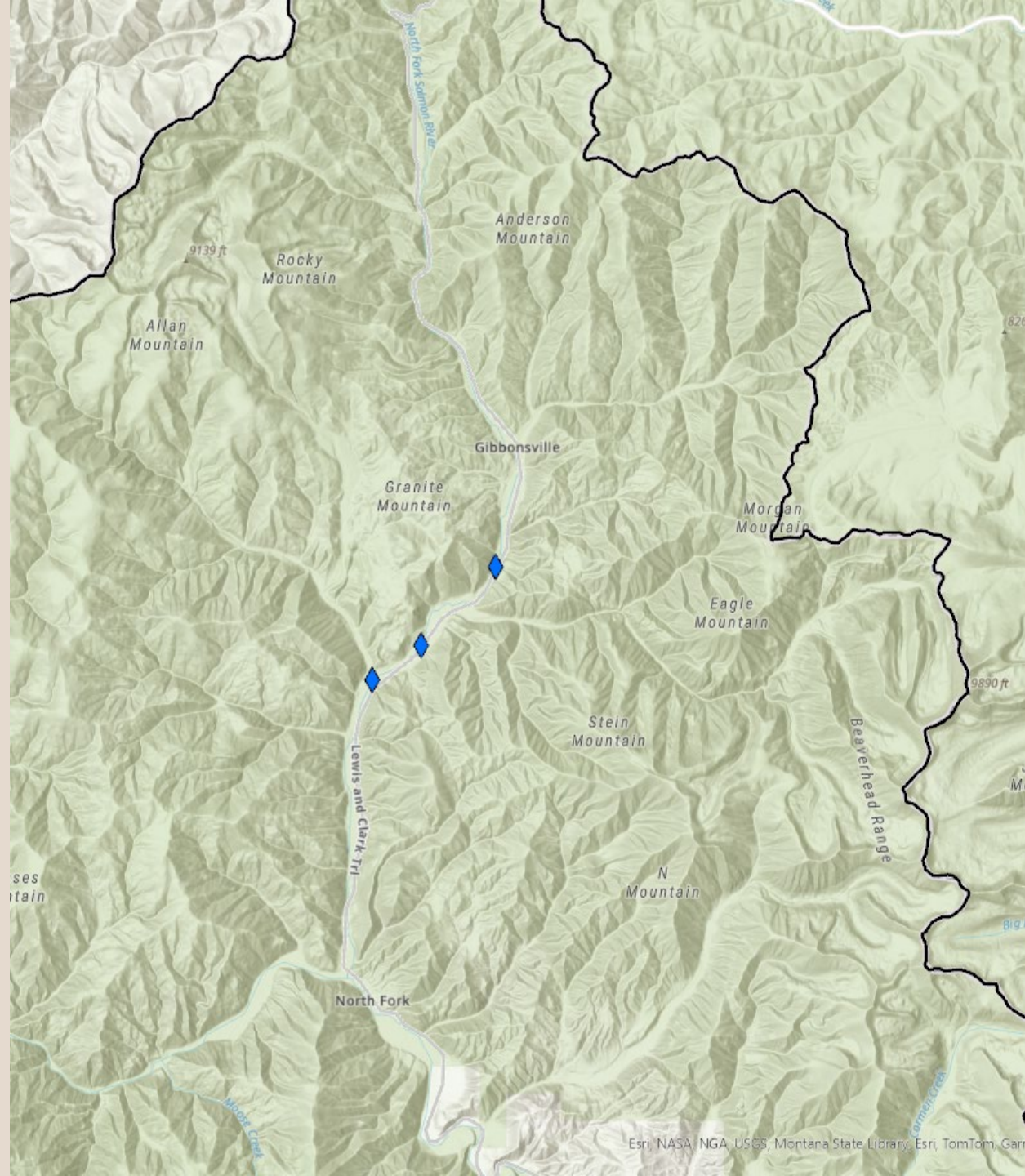
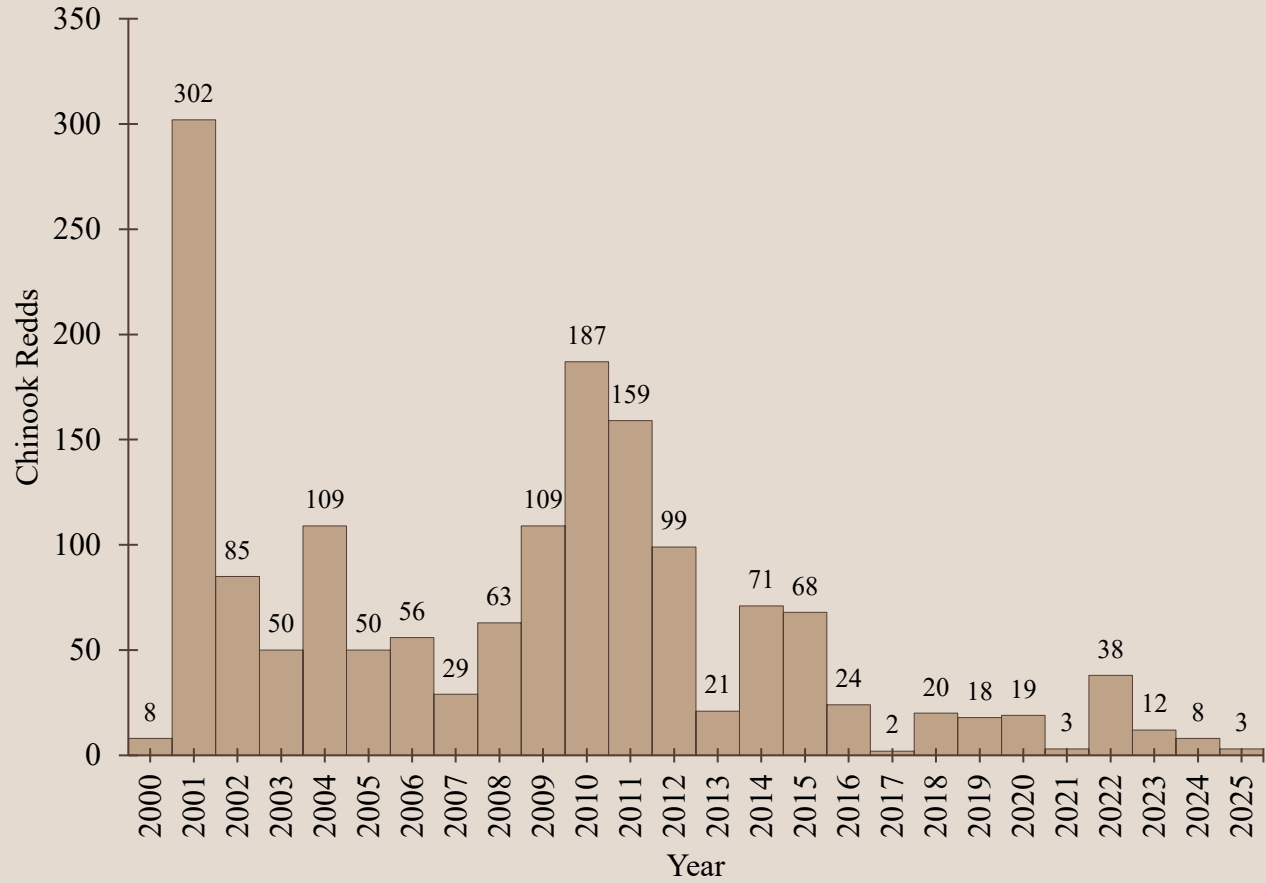
2025 Highlights

- General decline in number of redds in most population groups (Lemhi River drainage steady, Pahsimori River, and Upper Salmon River drainage incline)
- Rain and stormy weather caused dirty water from Herd Creek/East Fork Salmon downstream which made early redds difficult to detect



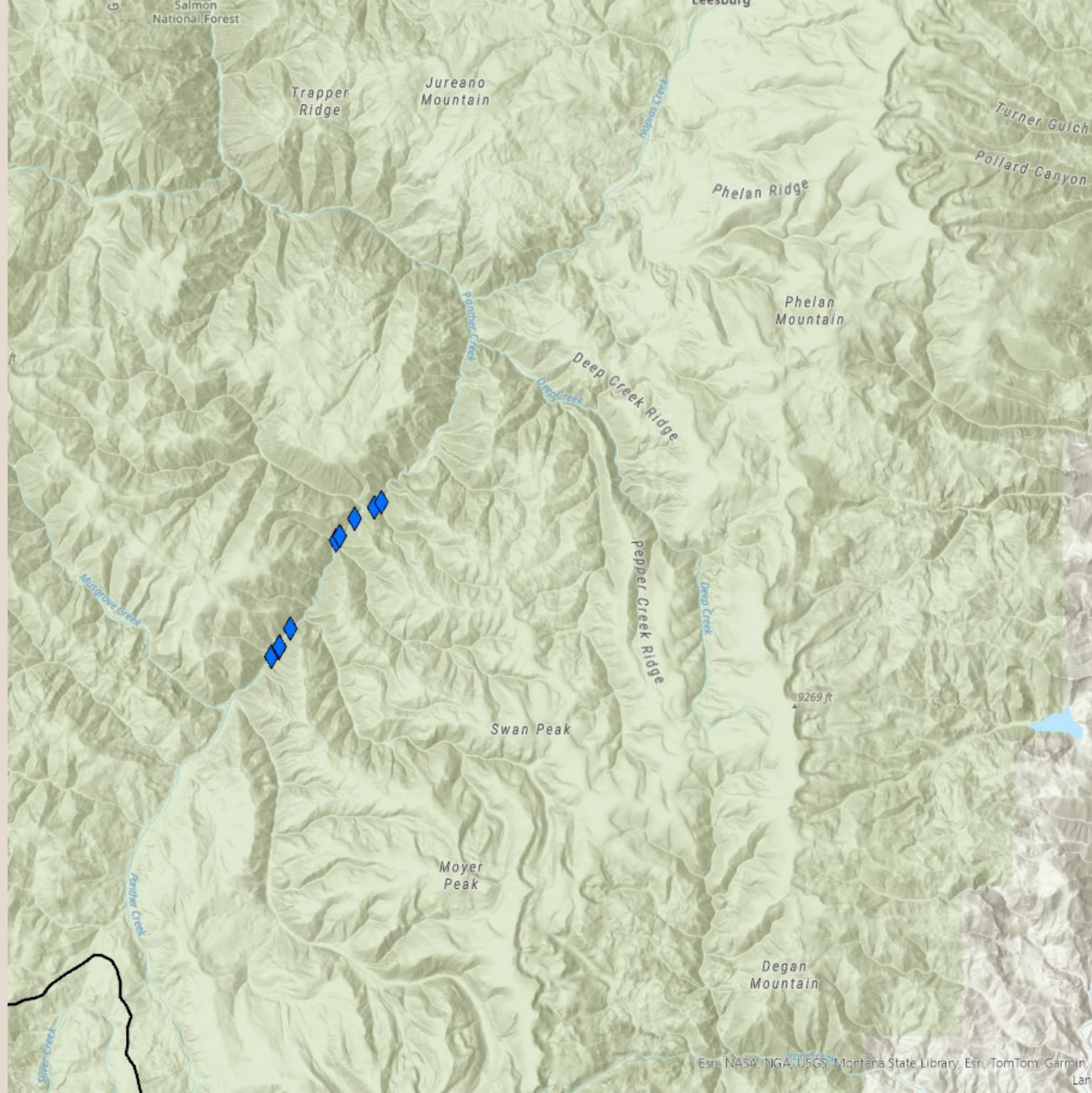
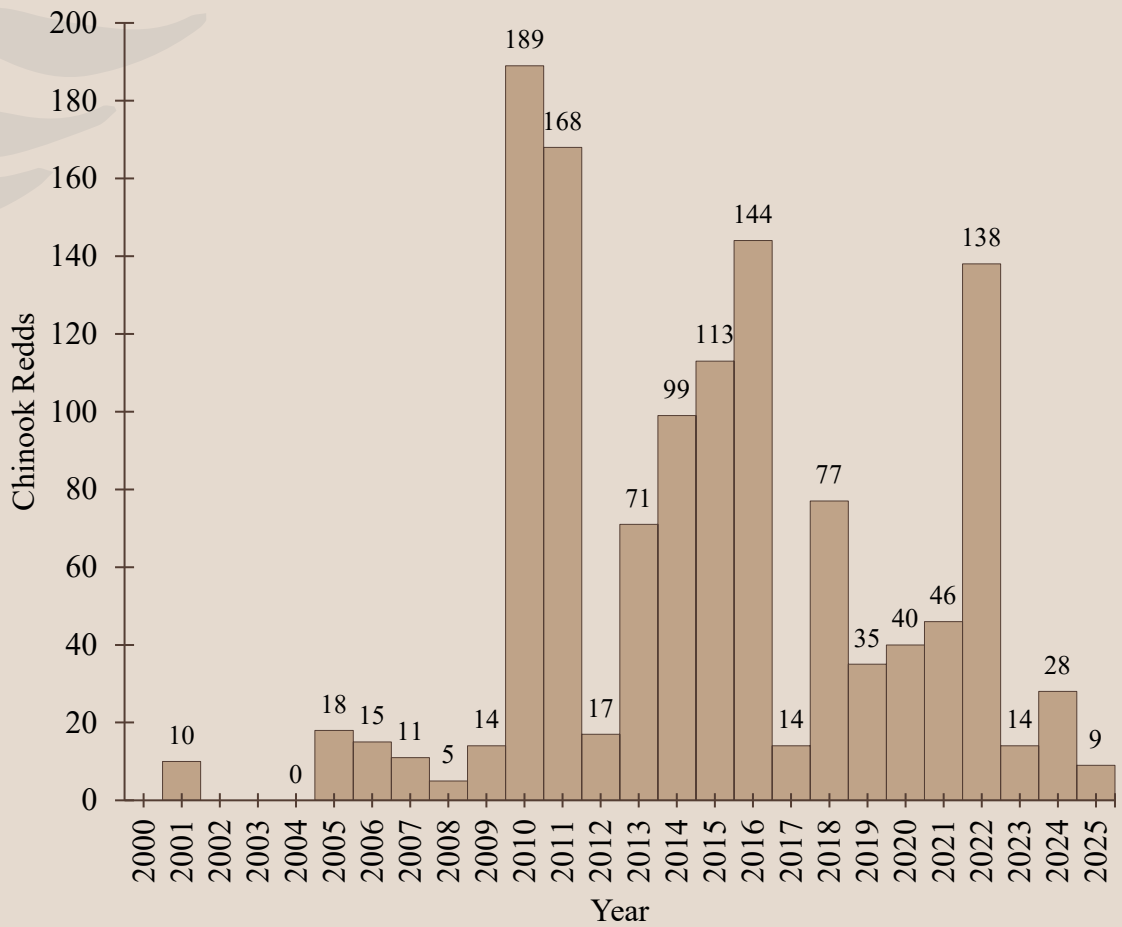


North Fork Salmon River



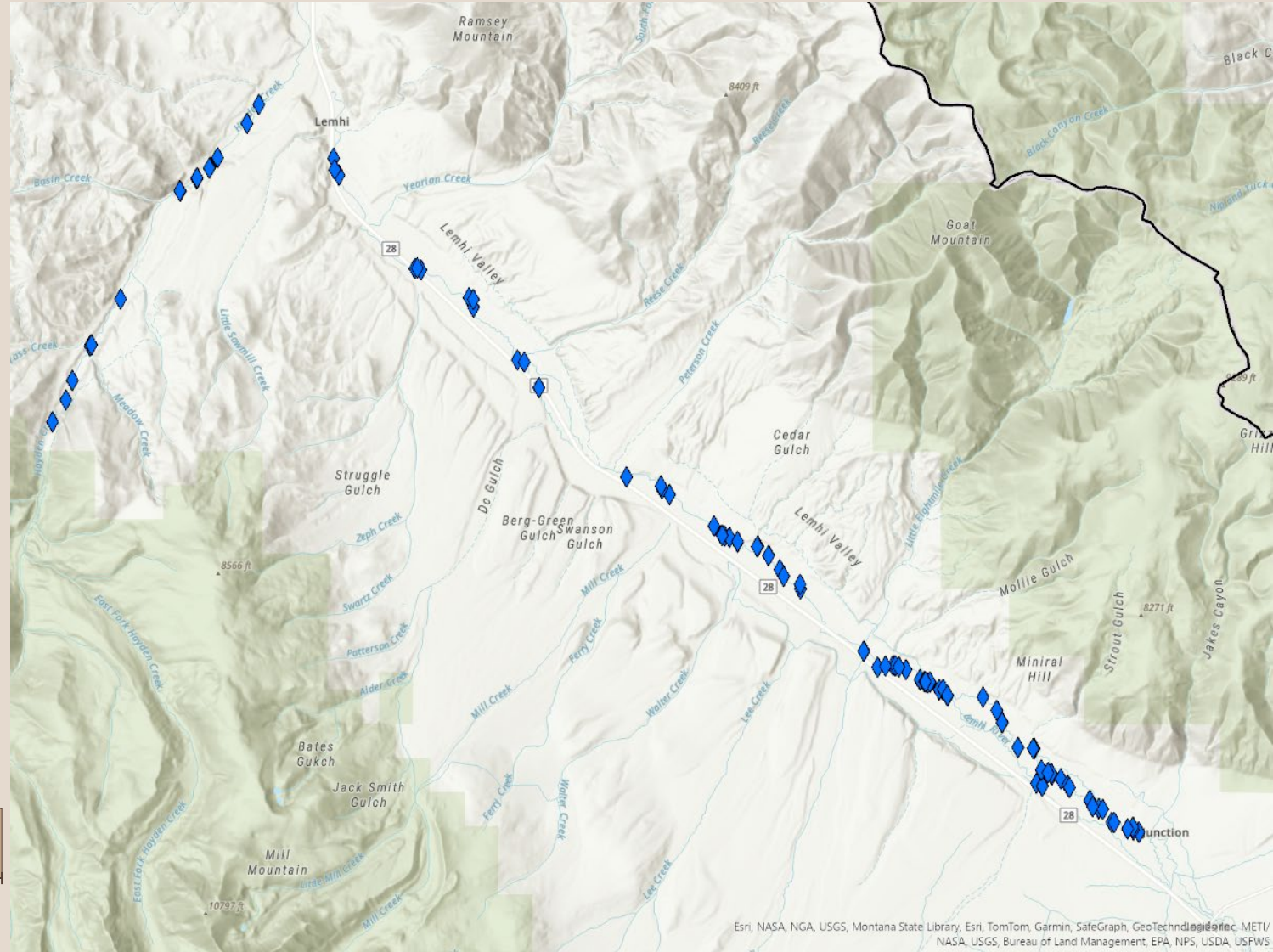
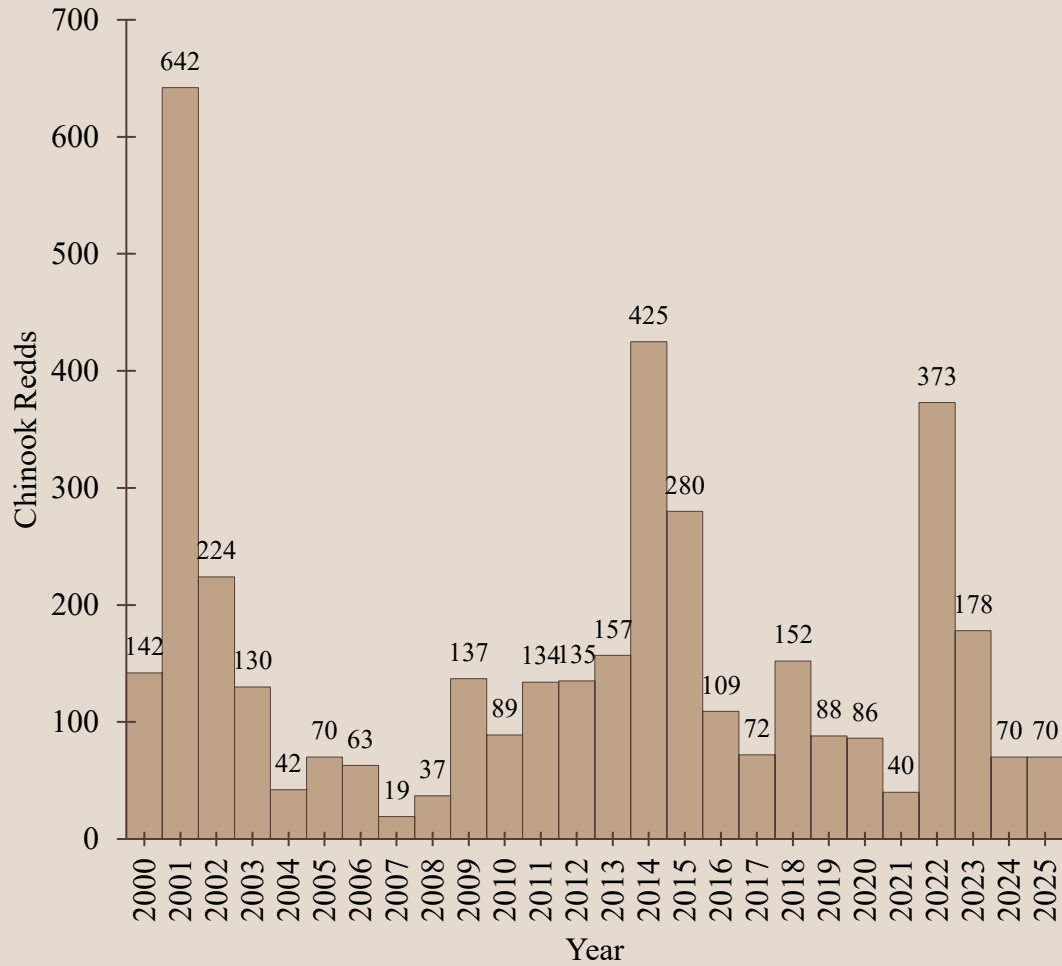


Panther Creek





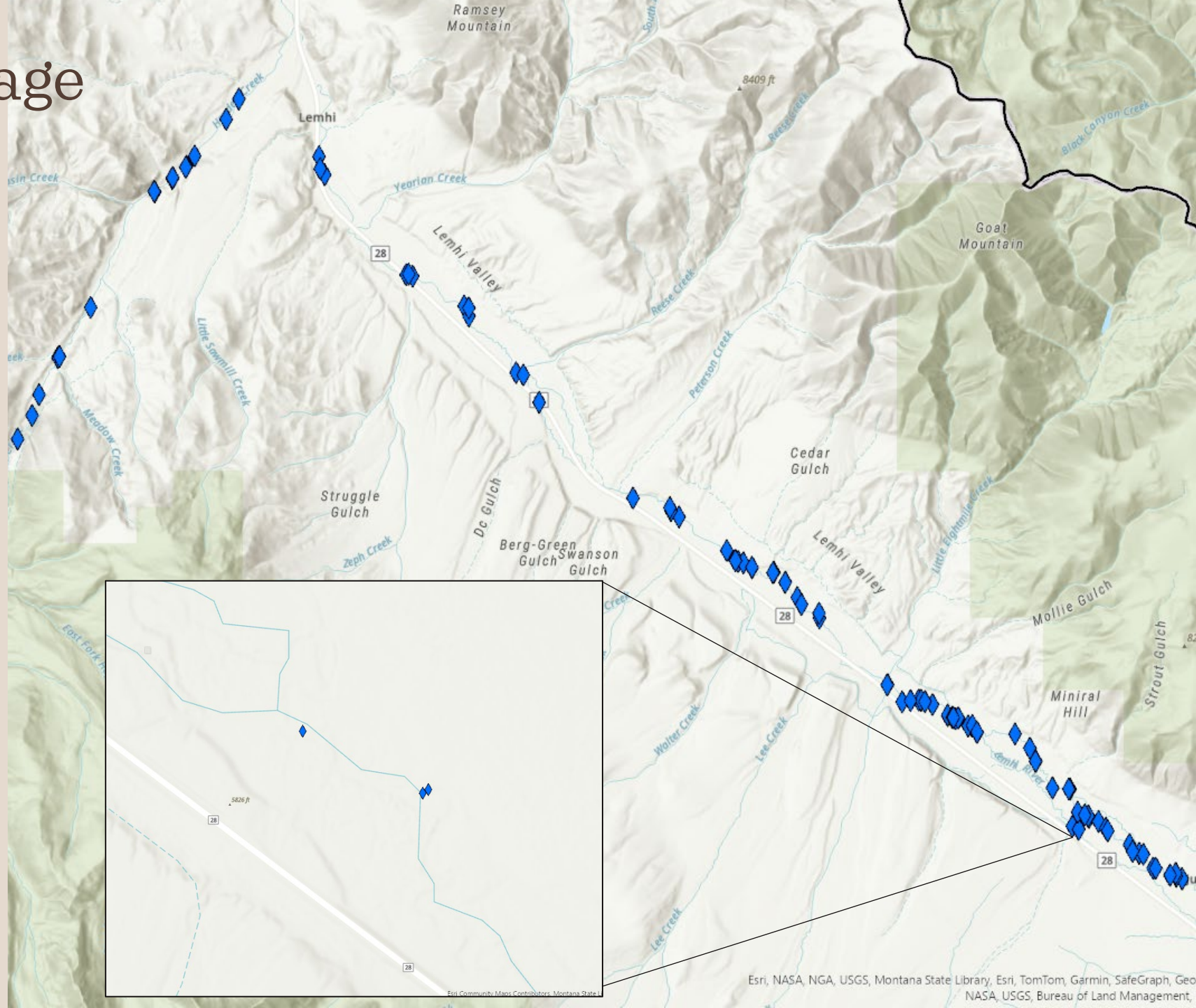
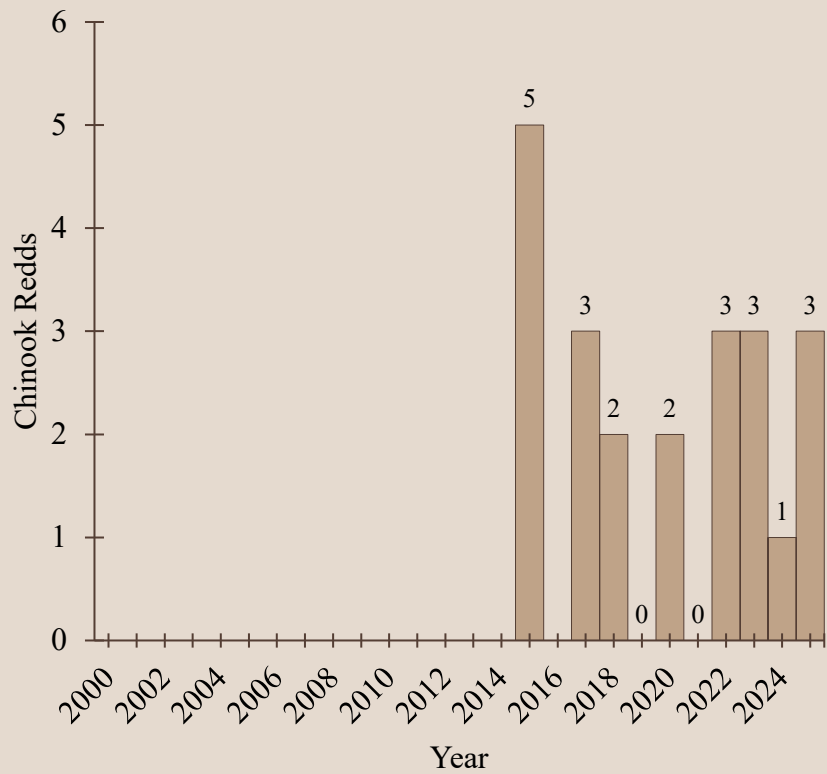
Lemhi River



Eri, NASA, NGA, USGS, Montana State Library, Eri, TomTom, Garmin, SafeGraph, GeoTechnic, METI/ NASA, USGS, Bureau of Land Management, EPA, NPS, USDA, USFWS

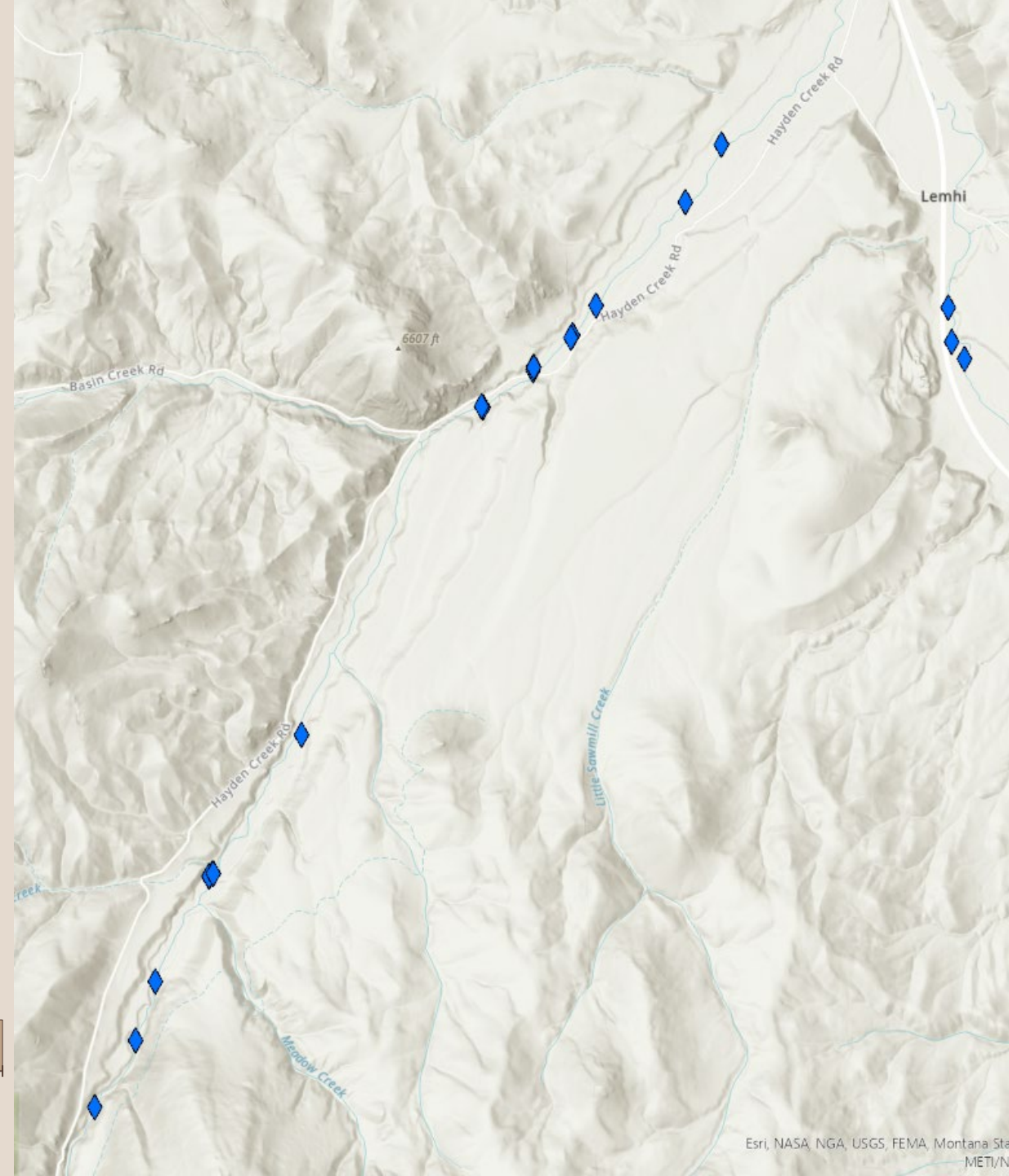
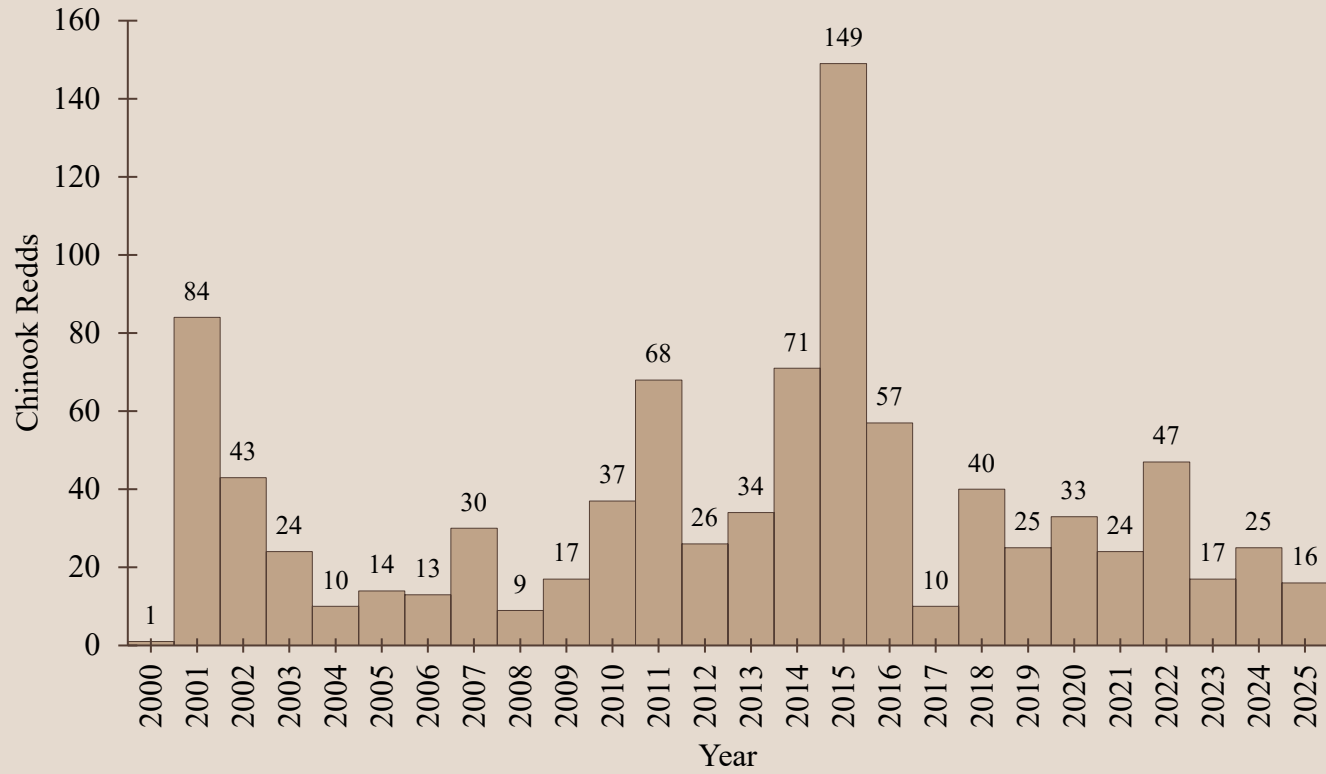
Lemhi River Drainage

- Bear Valley Creek: 0
- Big Springs Creek: 3
- Big Timber Creek: 0
- Canyon Creek: 0
- Hayden Creek: 16
- Little Springs Creek: 0



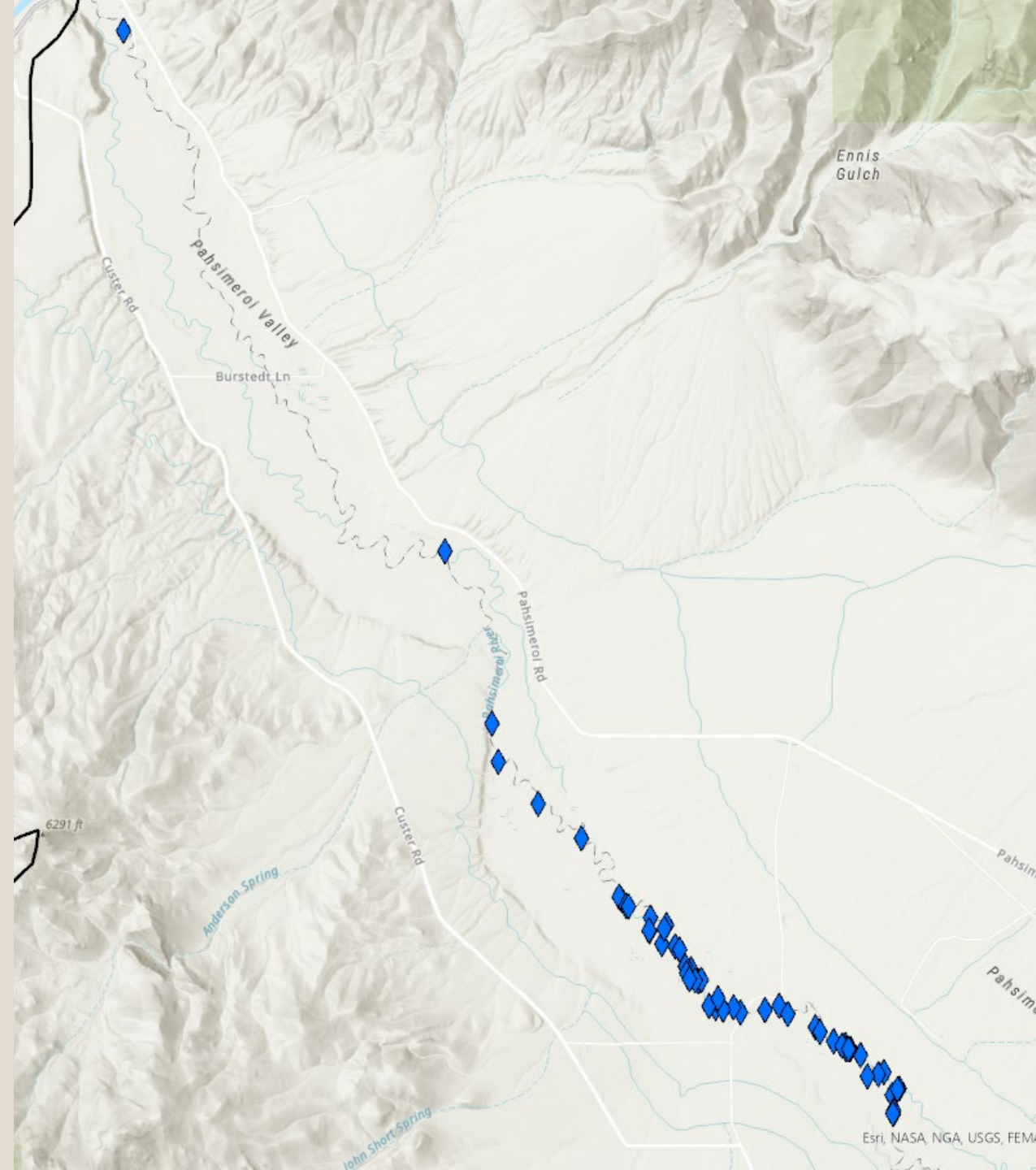
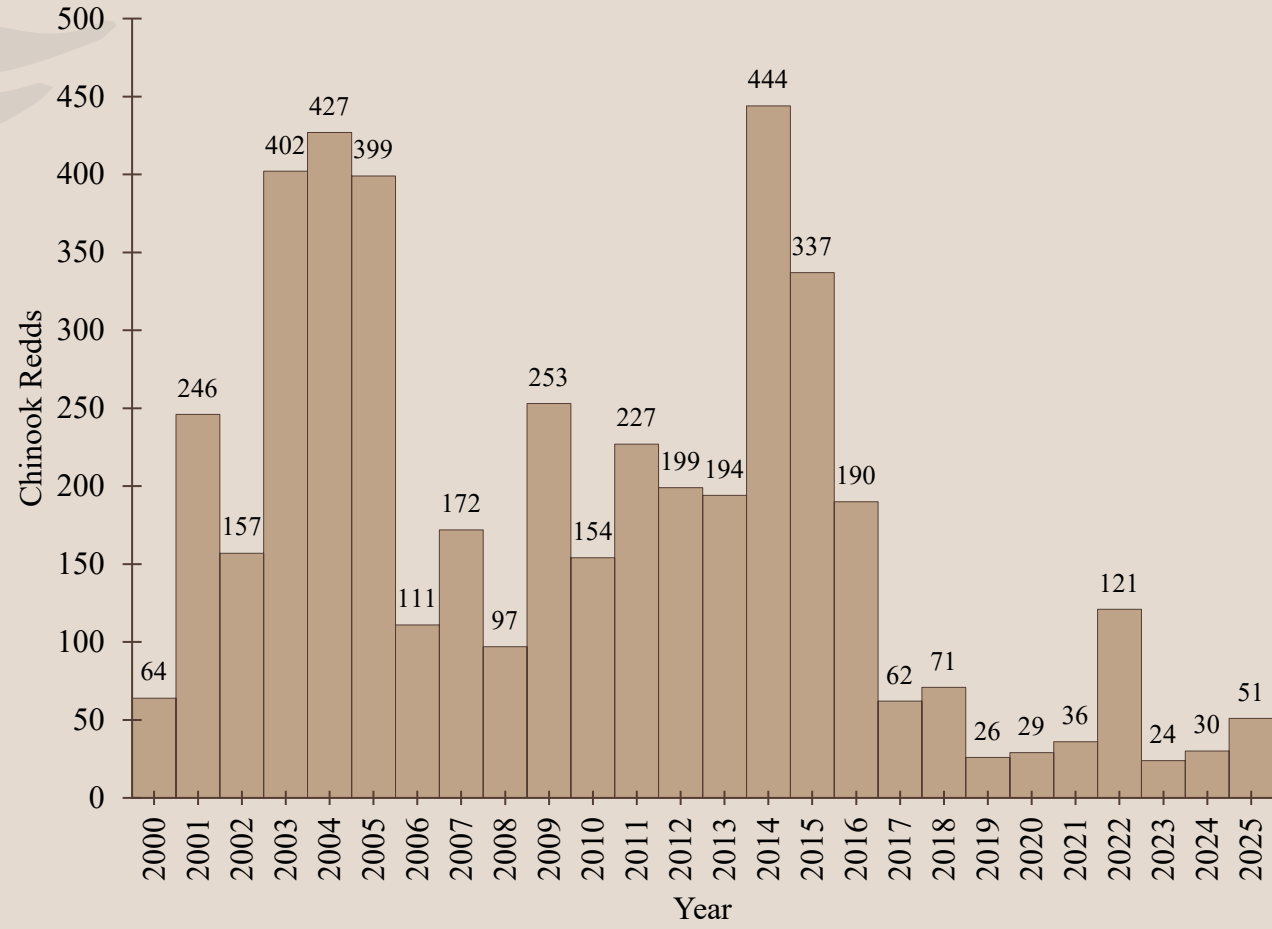
Lemhi River Drainage

- Bear Valley Creek: 0
- Big Springs Creek: 3
- Big Timber Creek: 0
- Canyon Creek: 0
- Hayden Creek: 16
- Little Springs Creek: 0





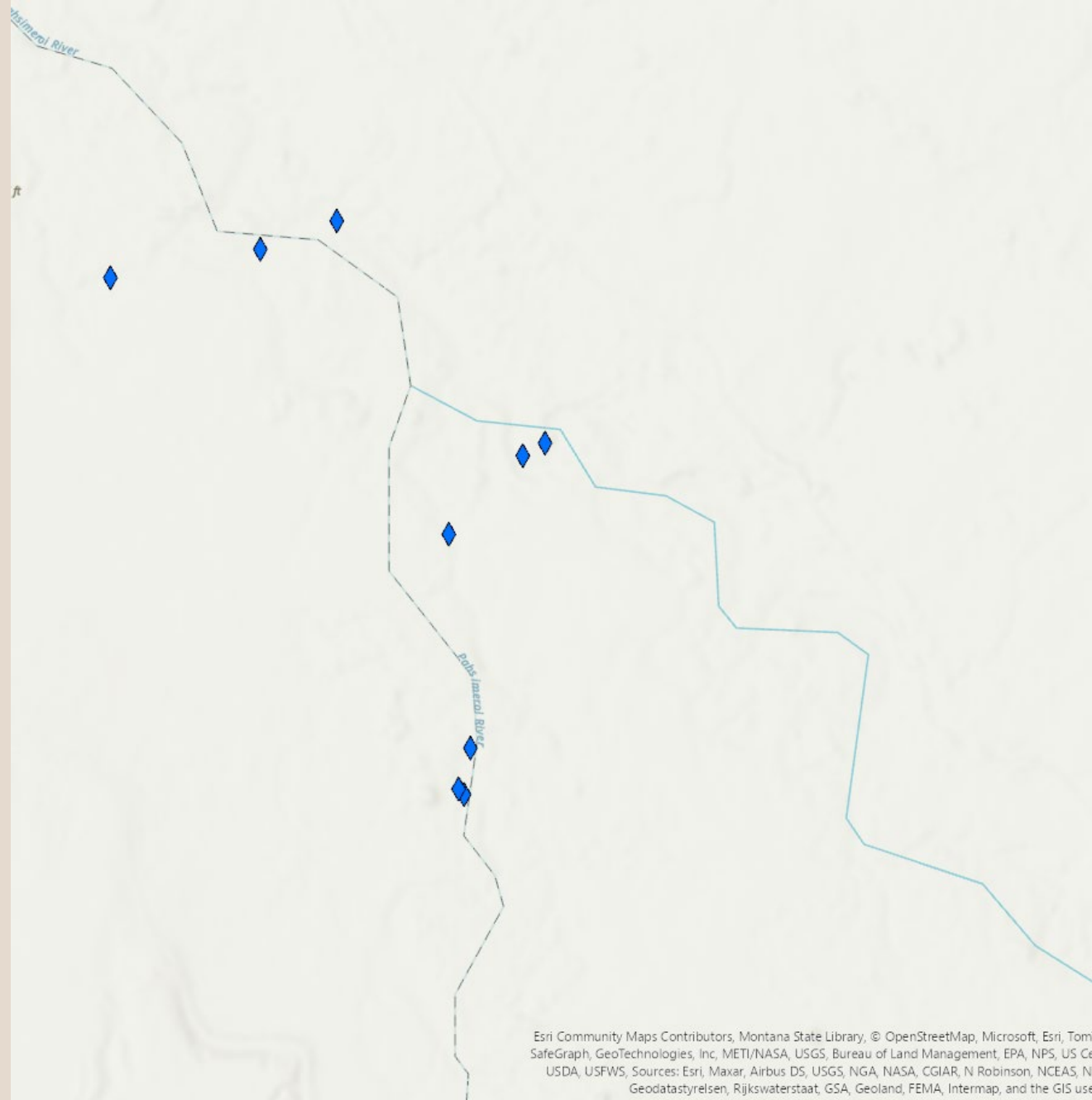
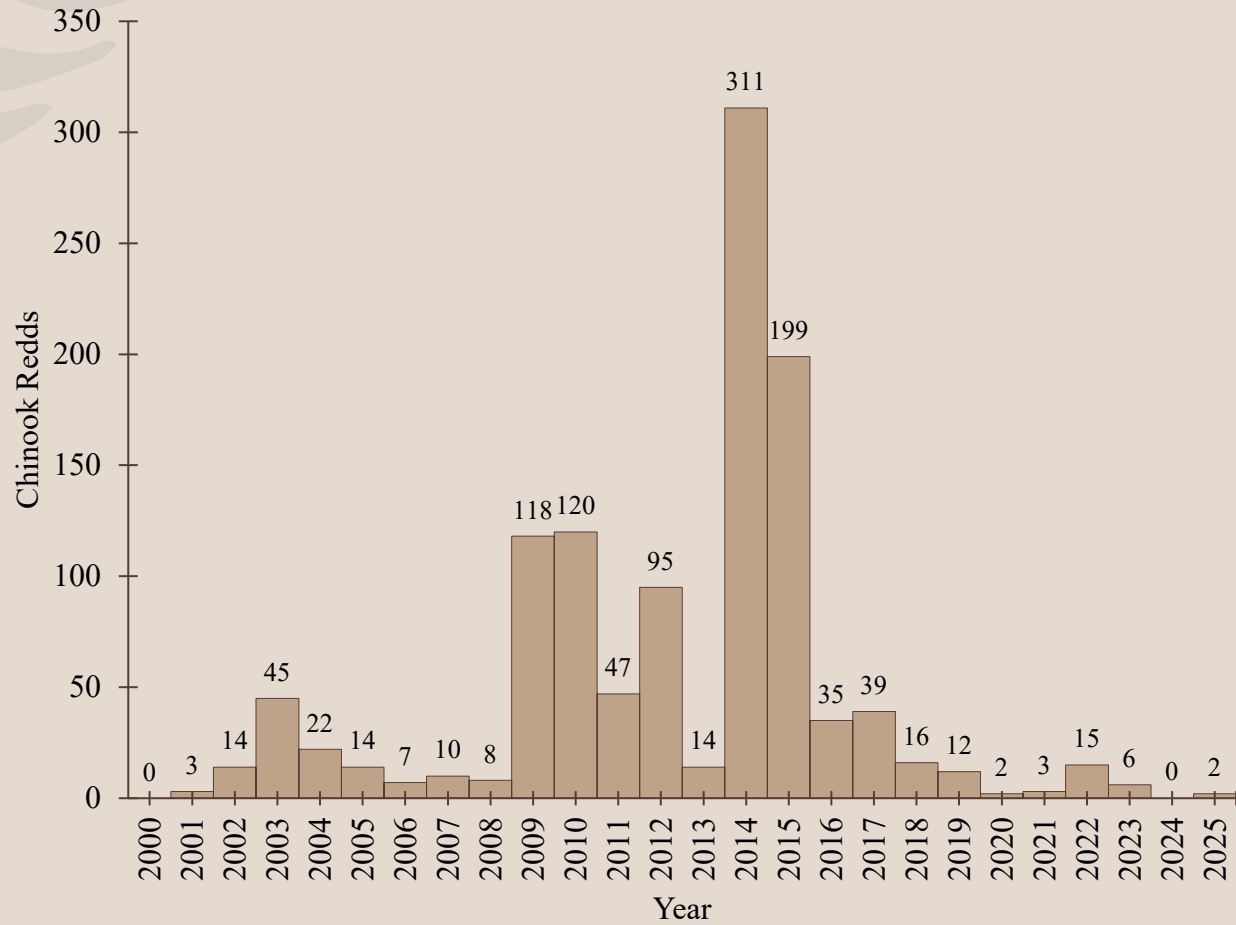
Pahsimeroi River





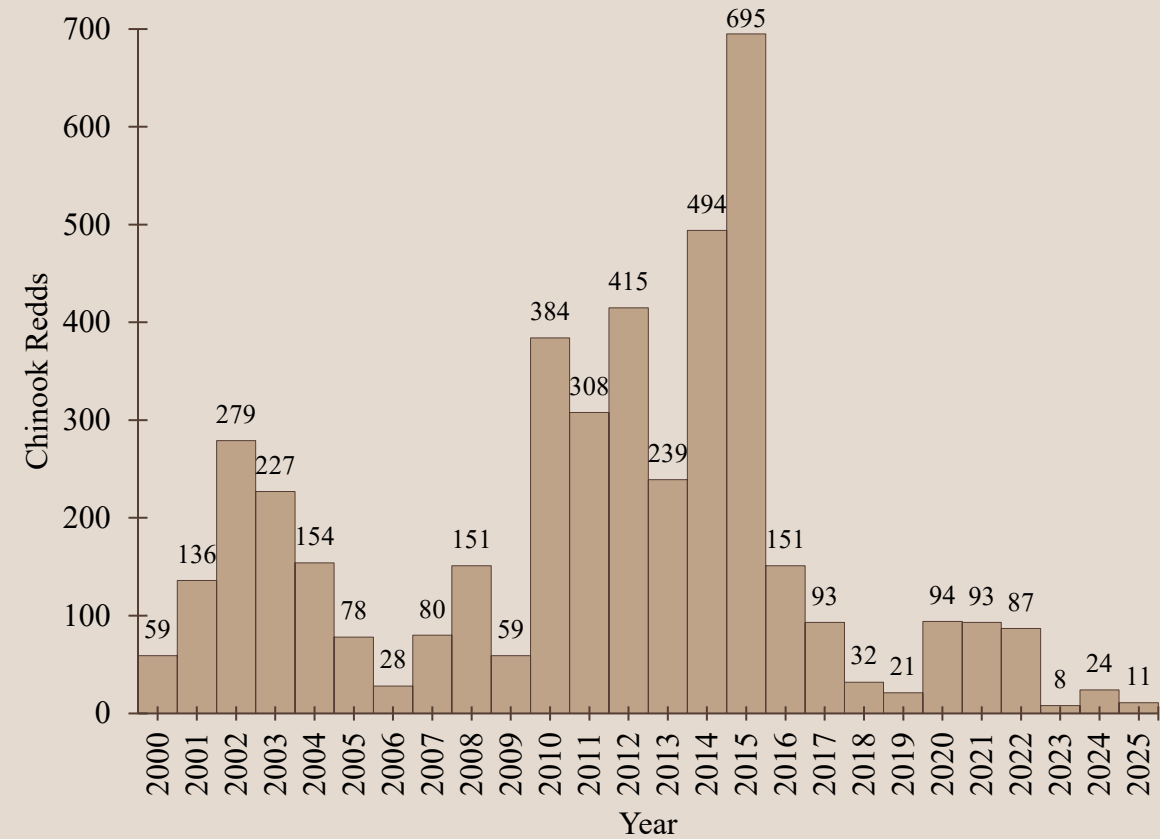
Pahsimeroi River

- Patterson Creek





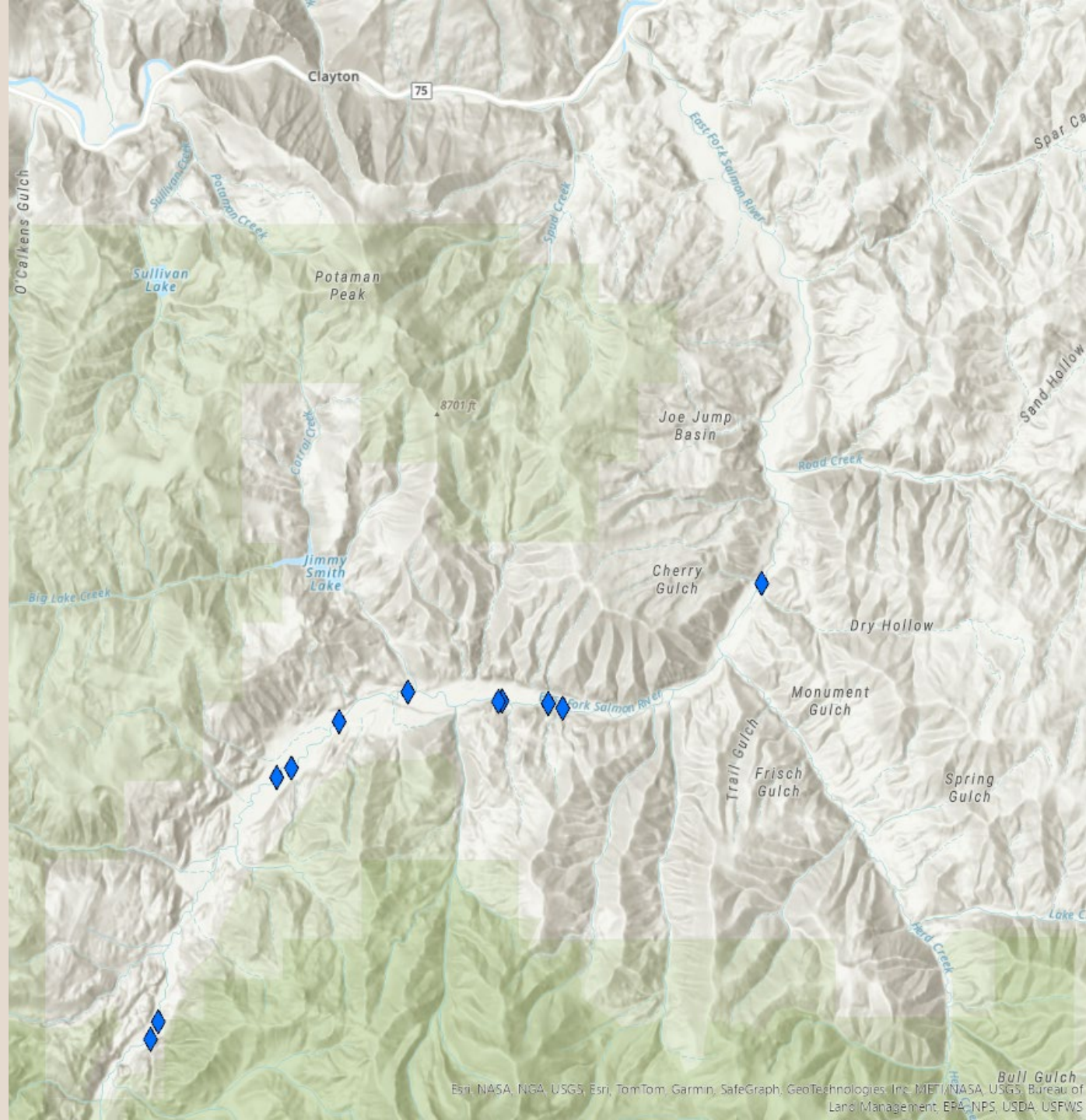
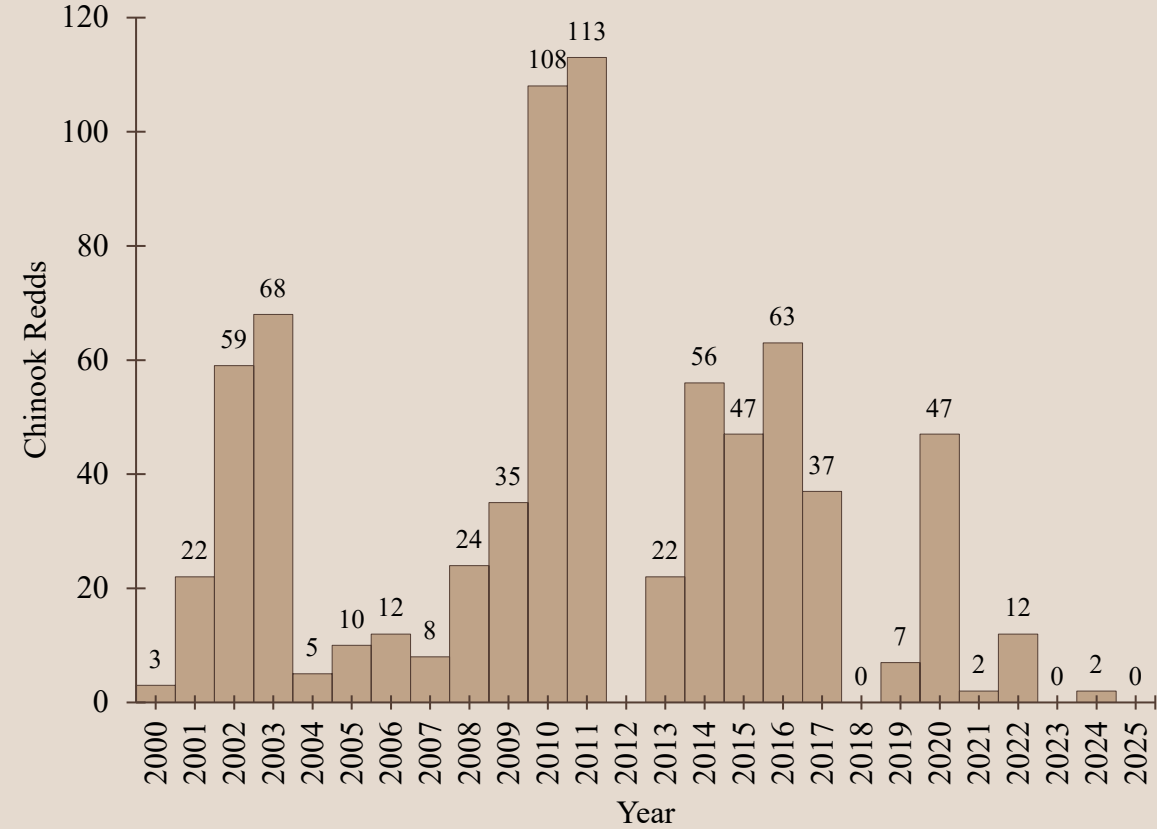
East Fork Salmon River





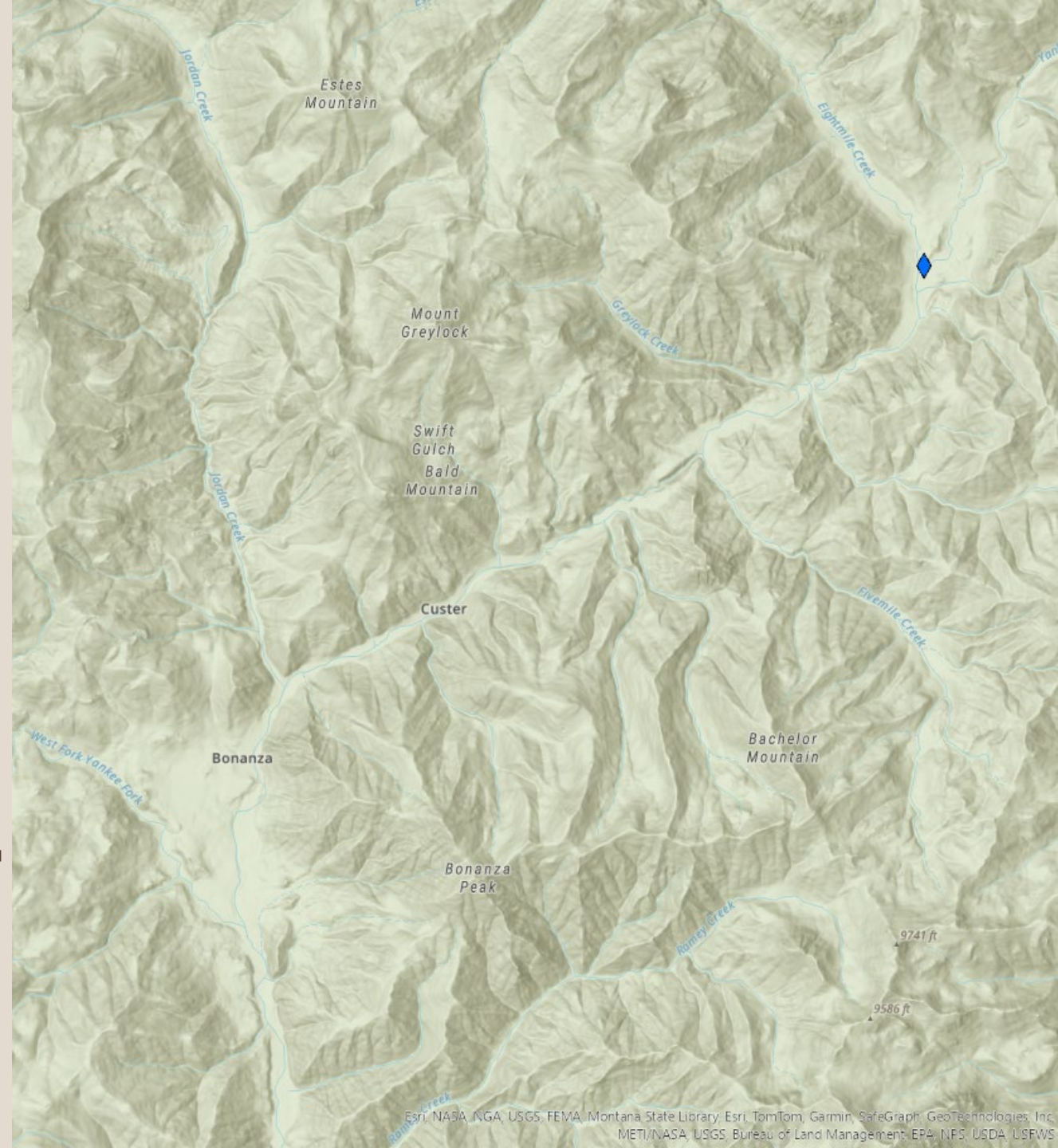
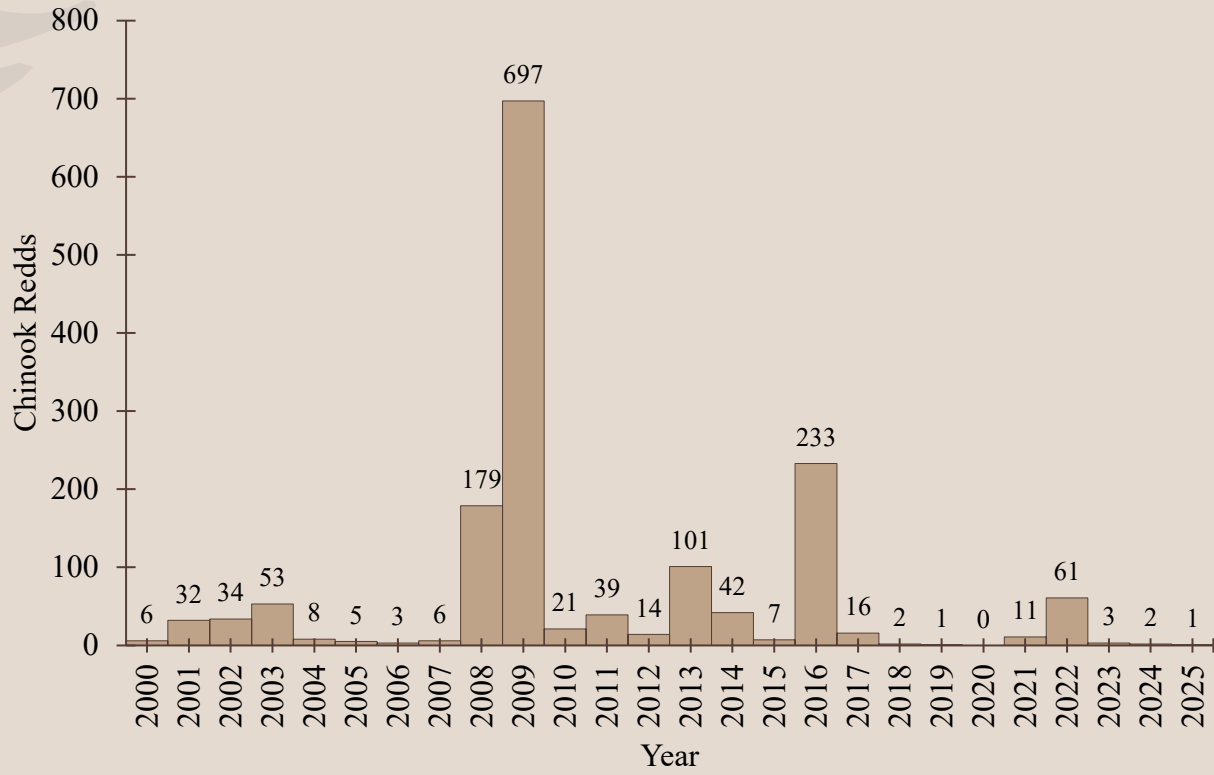
East Fork Salmon River

- Herd Creek





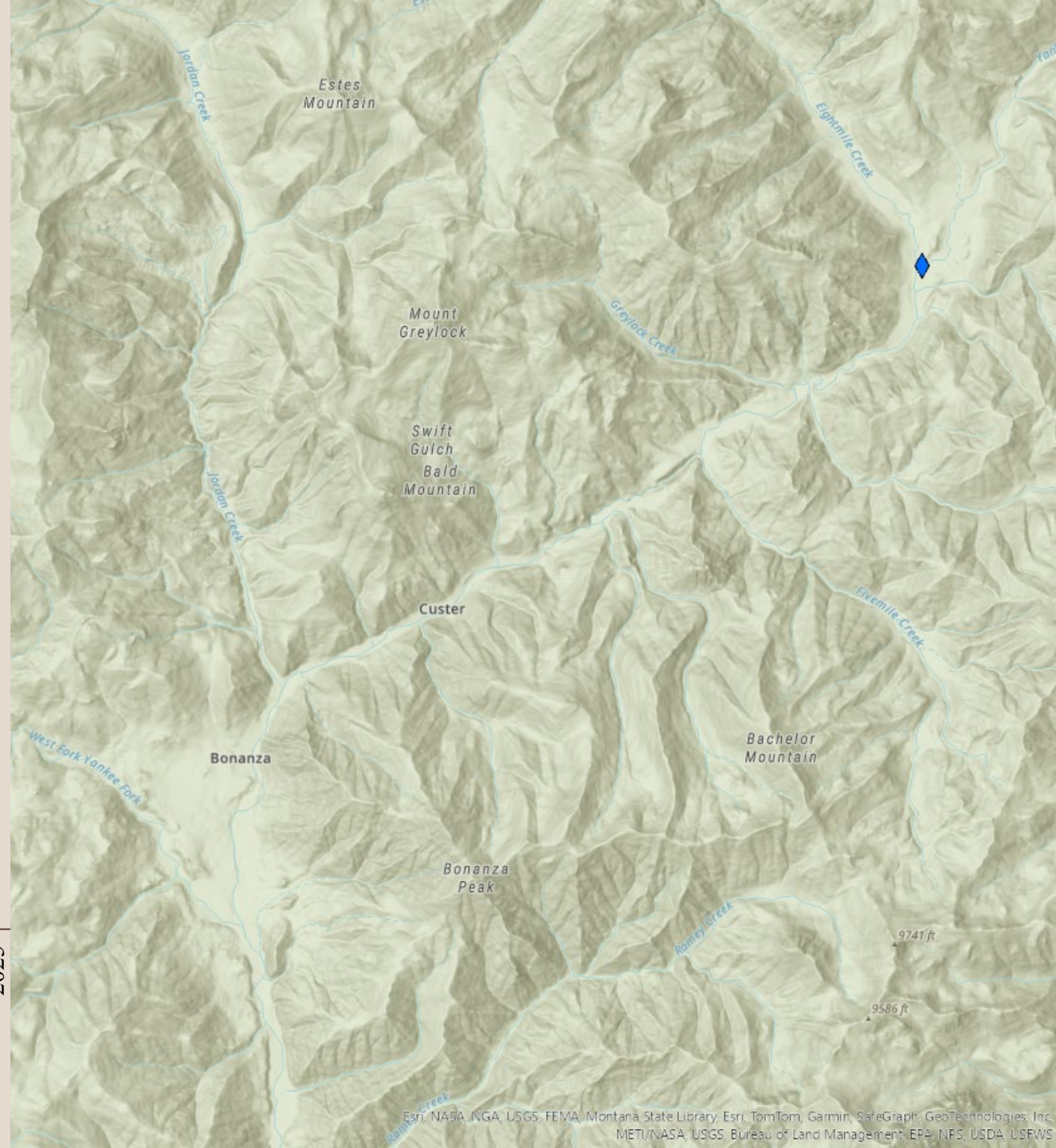
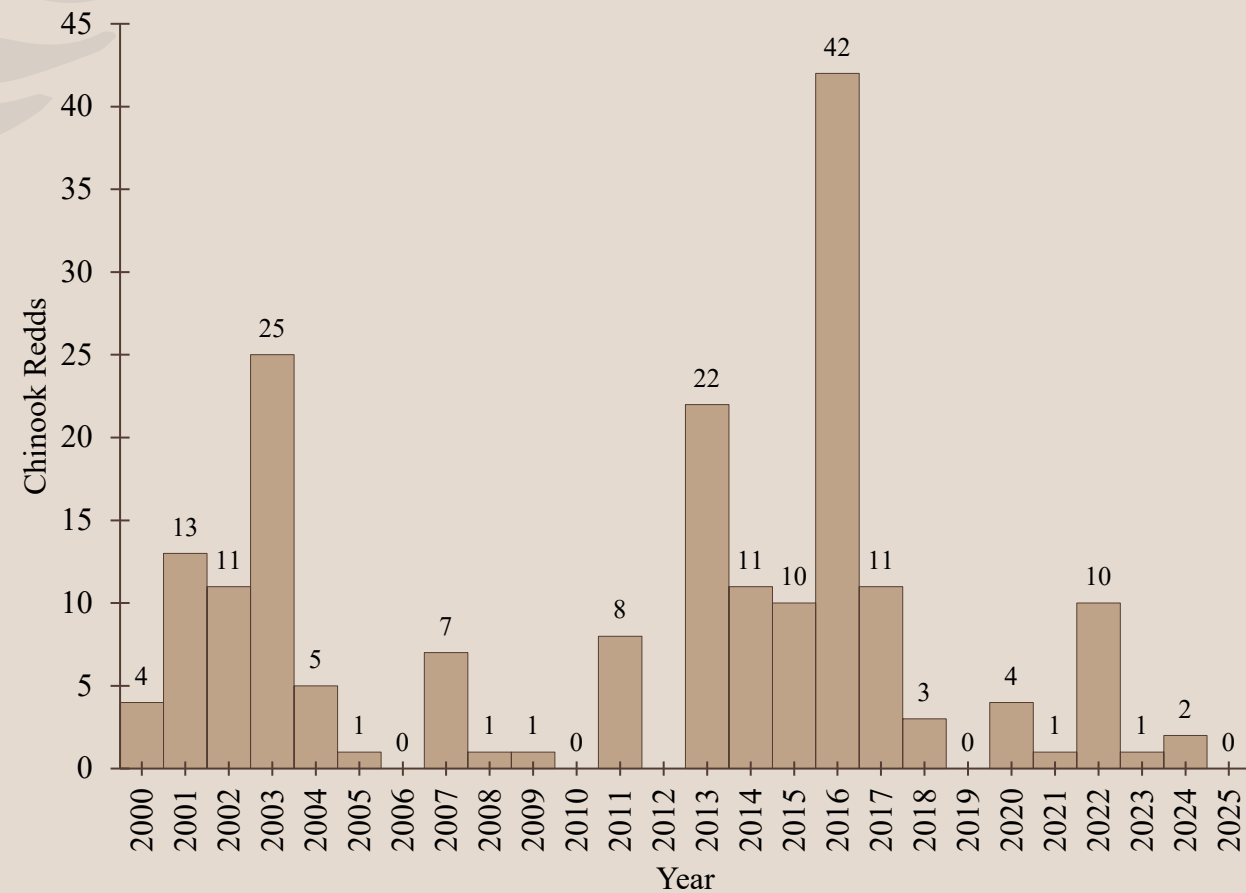
Yankee Fork River





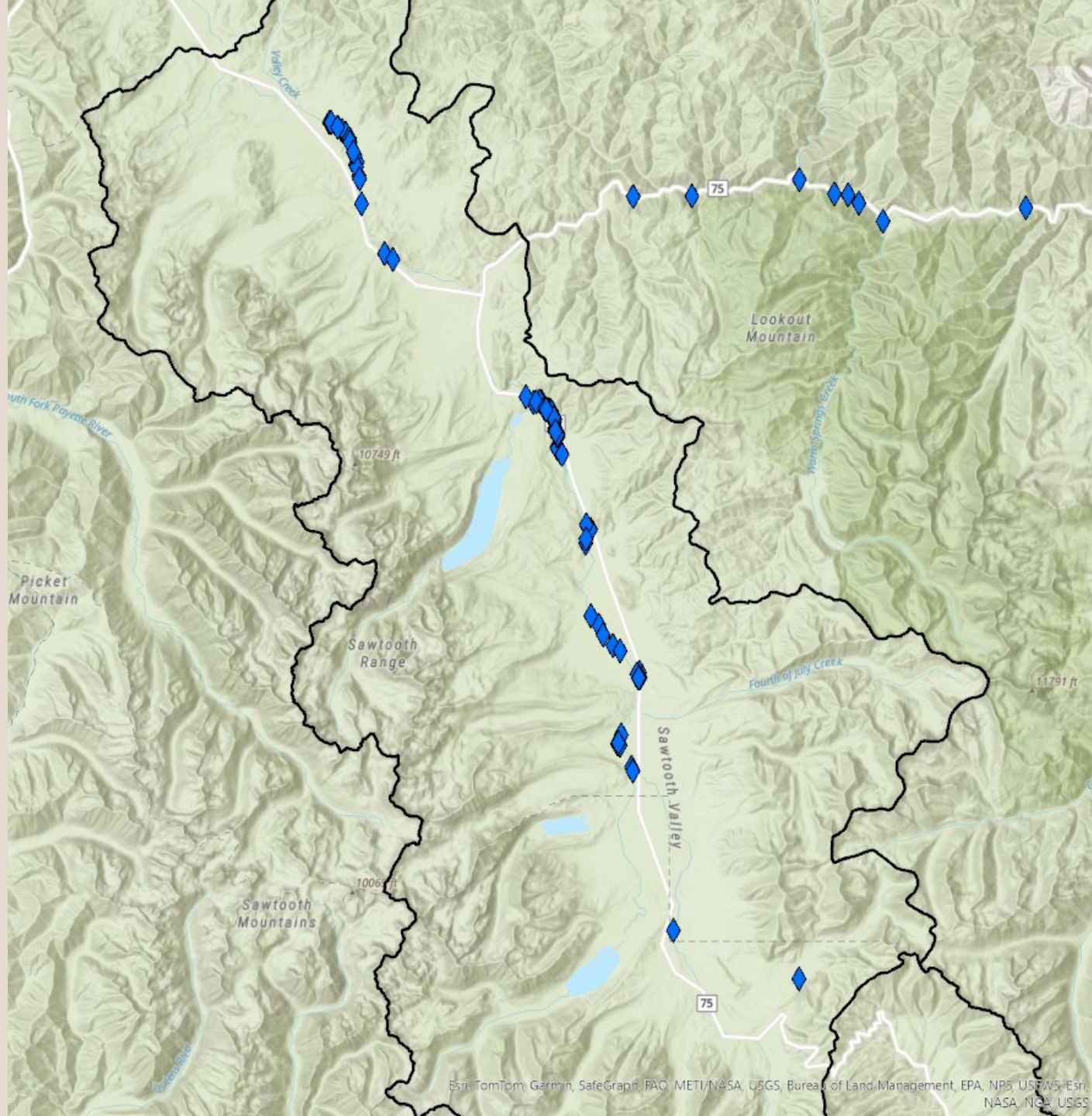
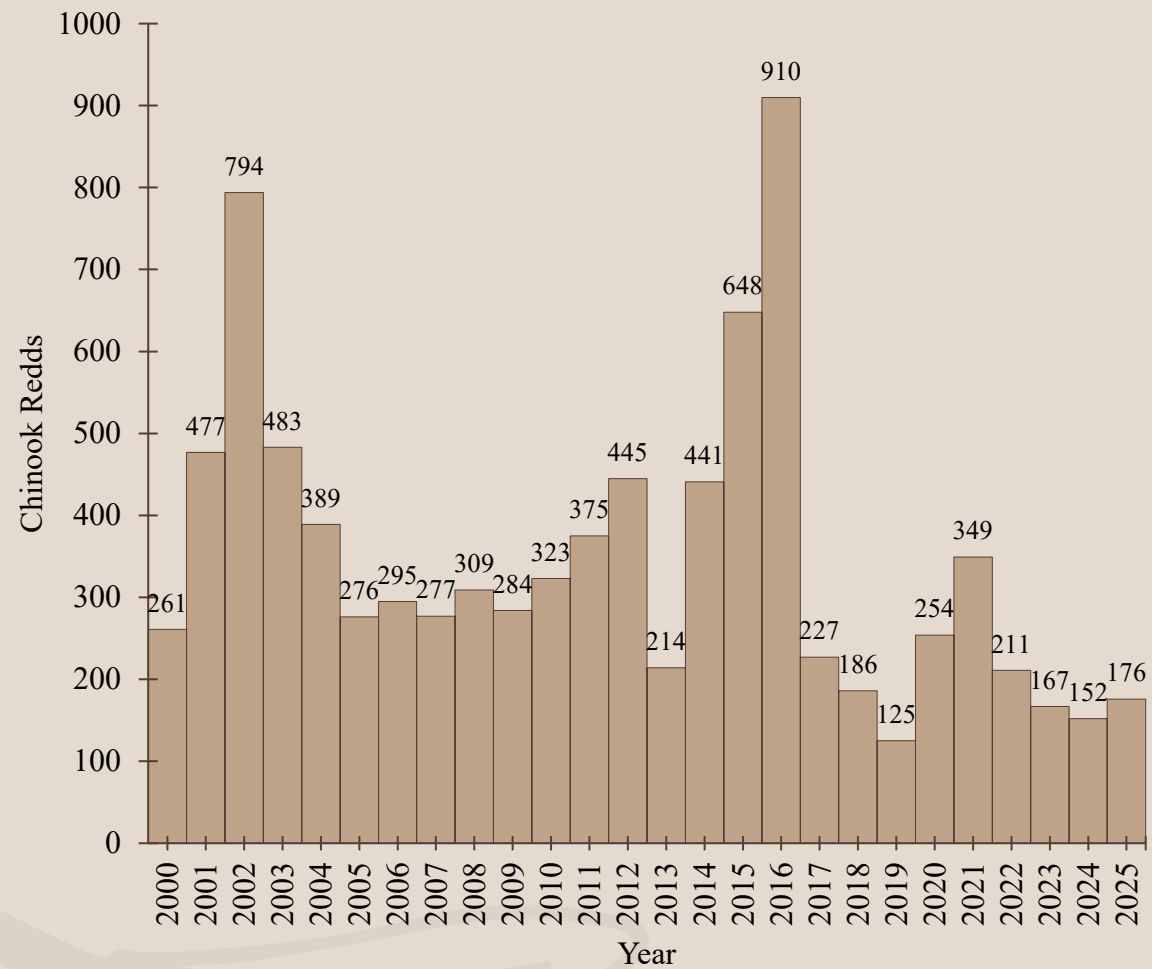
Yankee Fork River

- West Fork Yankee Fork River





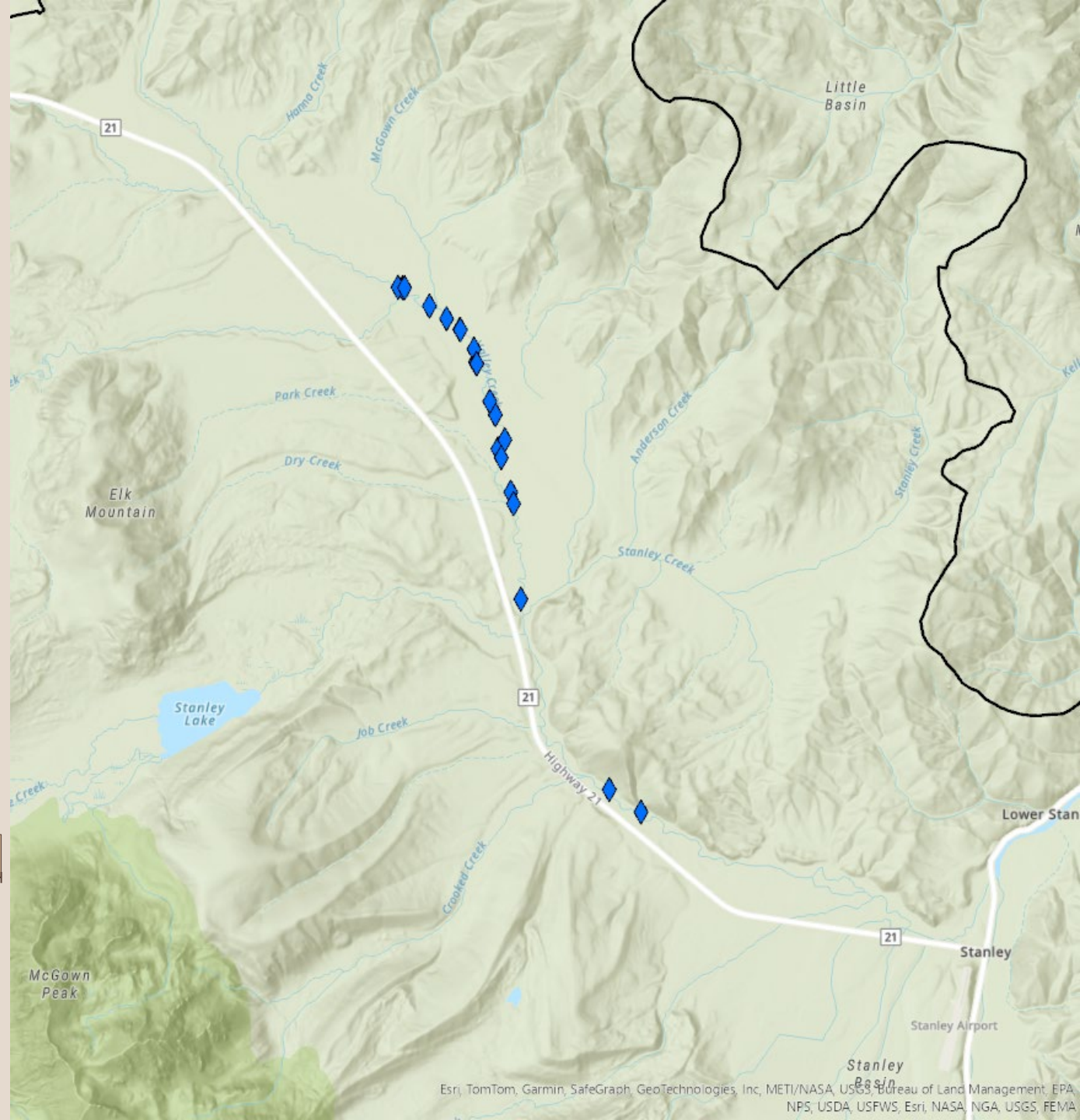
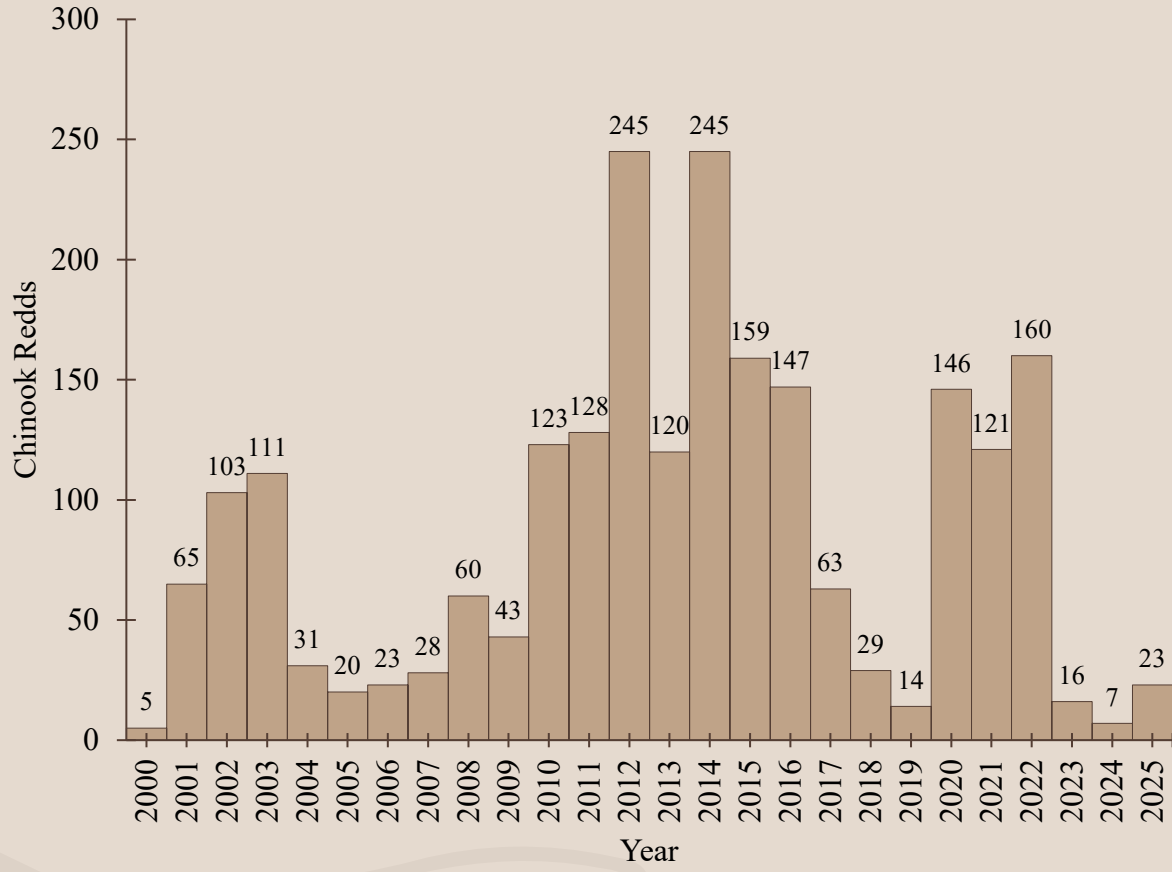
Upper Main Salmon River





Upper Salmon River

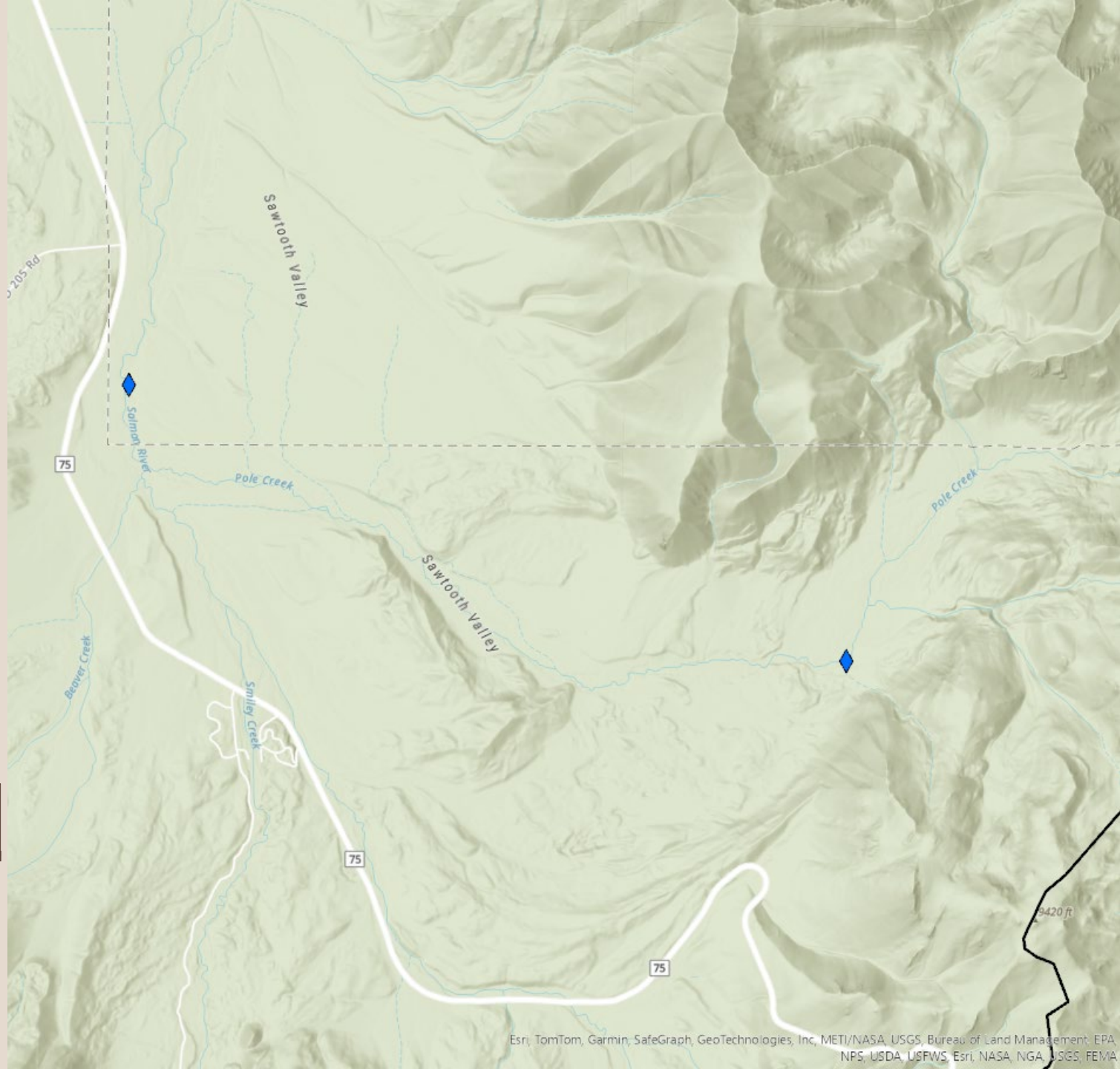
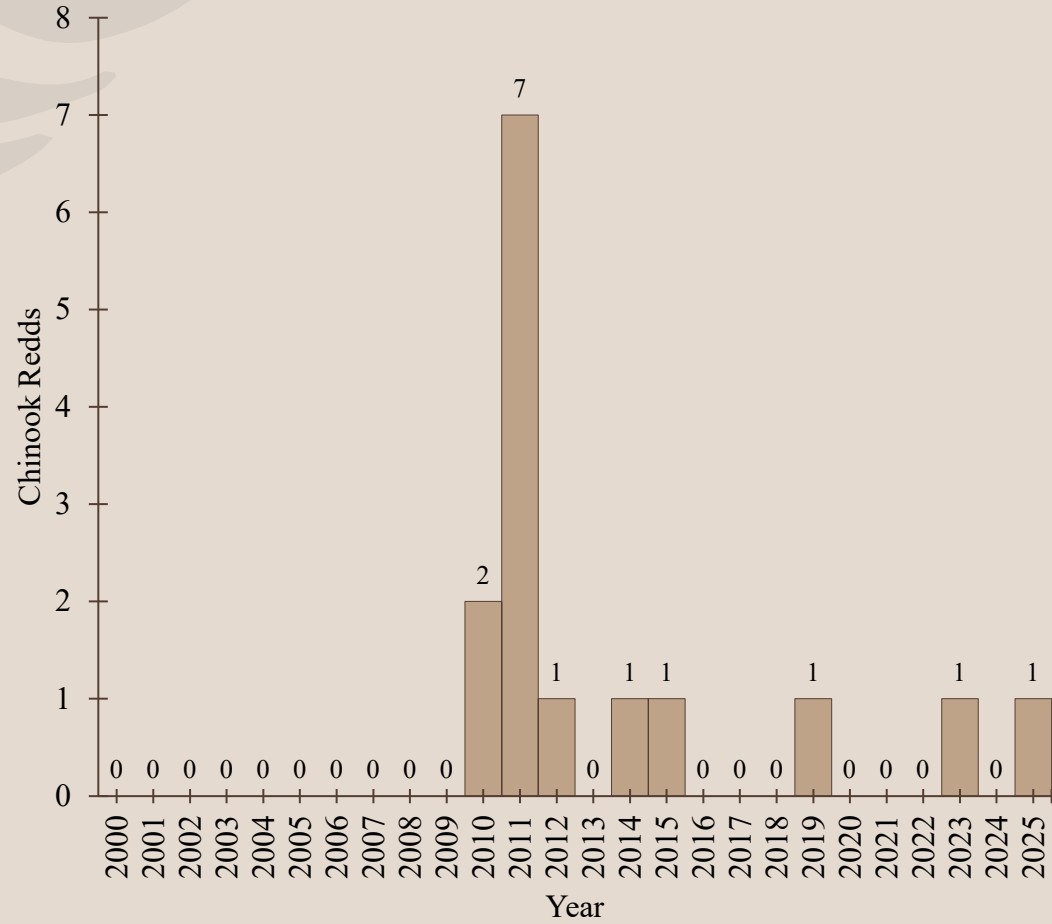
- Valley Creek





Upper Salmon River

- Pole Creek





thank you