

An aerial photograph of a wide river valley in winter. The river is partially frozen, with snow-covered banks and patches of bare earth. In the distance, a range of mountains is visible under a clear blue sky. On the right side of the river, there is some construction equipment, including an orange excavator and a yellow vehicle, suggesting a rehabilitation project.

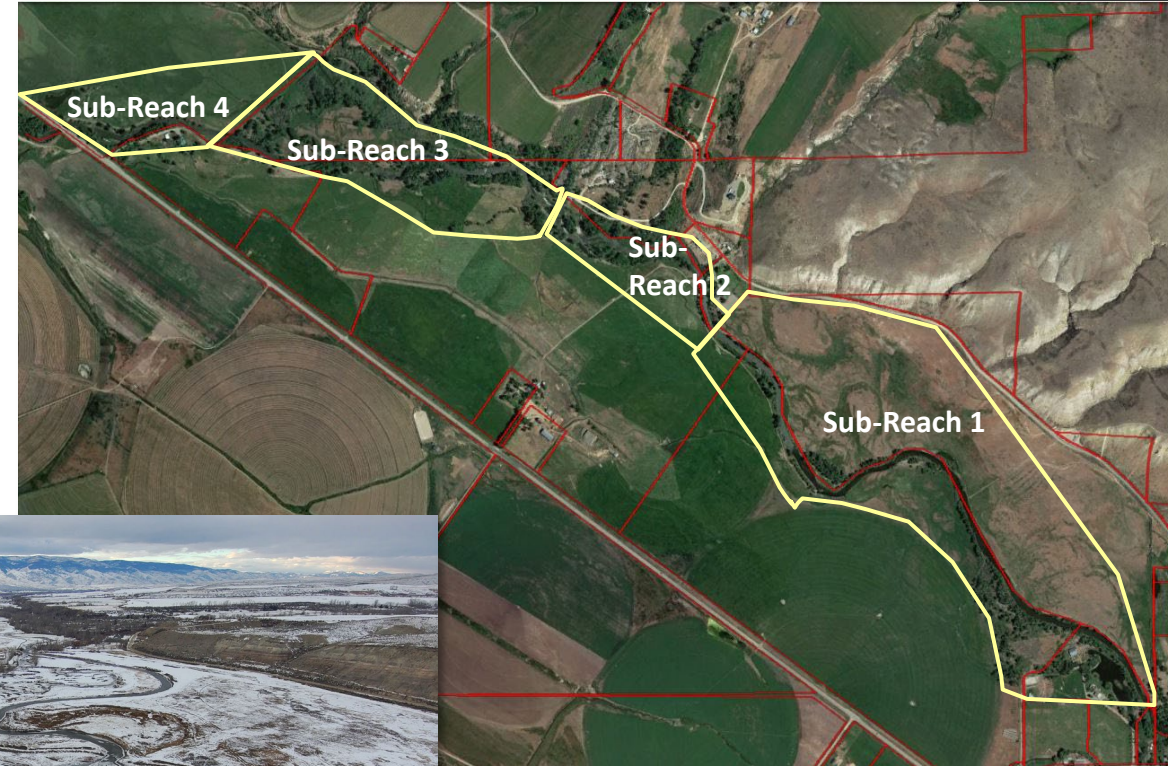
Lower Lemhi Rehabilitation Winter Monitoring 2025-2026

Megan Heller

Idaho Department of Fish and Game

Lower Lemhi Rehabilitation Project

- Downstream of Baker
- 2.4 river miles
- Long-term, large-scale project
 - 2005-Present



2008



2025



Current Status

- 2→3 phases of adaptive management actions
- Graduate Research
 - University of Idaho
 - Ice formation on Lemhi River
 - Guide future restoration

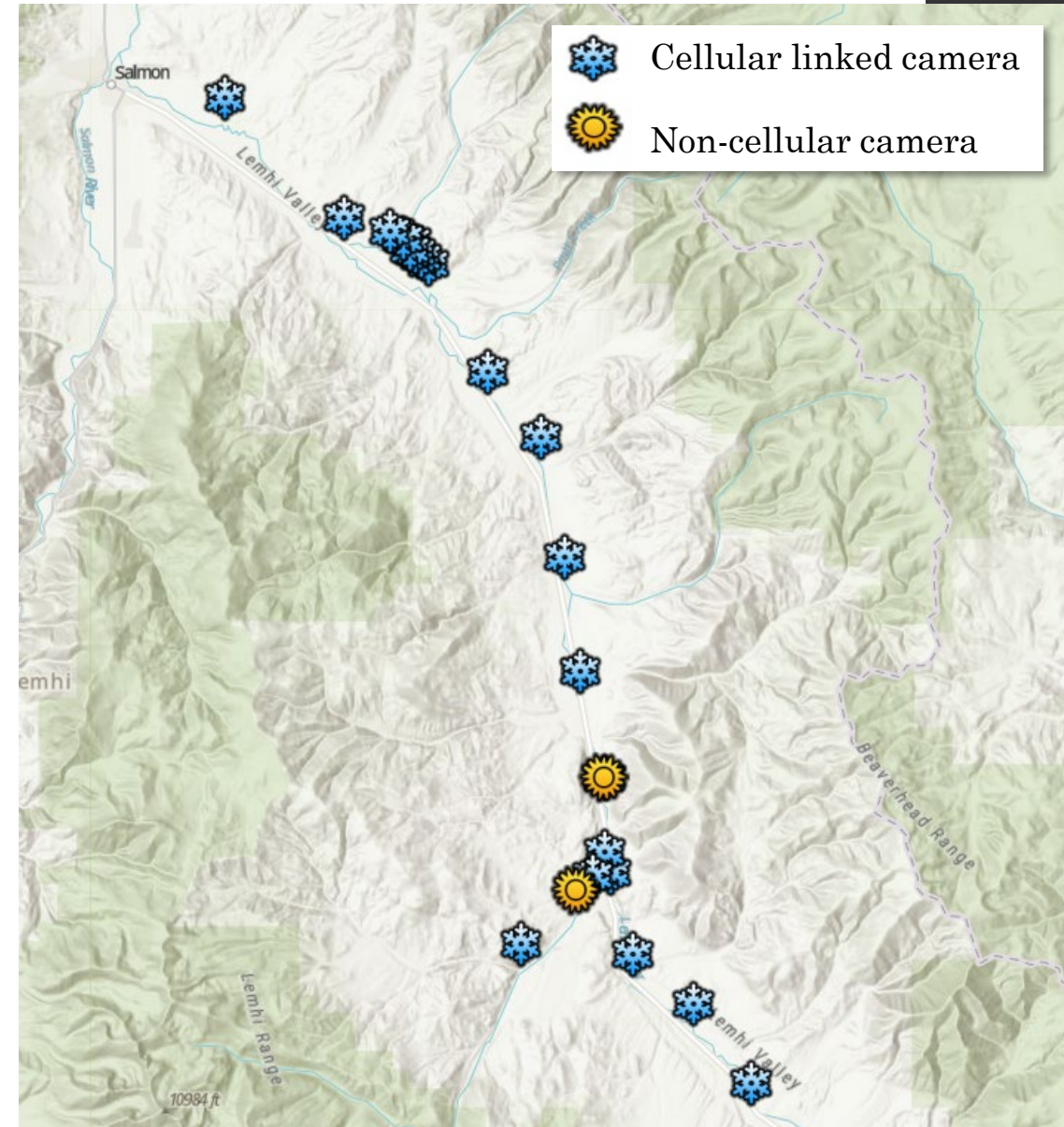
25/26 Monitoring Plan

- Condition monitoring
 - Cameras
 - Drone flights
- Weekly updates
 - Design team
- Contractors prepared for potential ice management
 - On the ground presence



Cameras

- 24 cameras
 - Paired with staff gauges to monitor stage and air/water temperature recorders
- Distributed throughout the Lemhi basin
 - Focus on the Lower Lemhi Rehabilitation project
- Allow staff to monitor ice development and respond quickly



Landowner Coordination

- Weekly updates including:
 - Forecast
 - Site conditions
 - Relevant imagery
- Can expect updates starting early January or as weather dictates



